

35260-MP

Arduino W5200 Ethernet Shield

SEED STUDIO Ethernet Shield with Micro SD Slot
High speed Ethernet controller W5200
32 Kbytes internal buffer
Supports up to 8 simultaneous TCP/UDP connections
SPI interface
Grove ports for I2C and UART
Minimal RJ45 Ethernet port
Micro SD card function 2GB FAT 16/32

Hardware Configuration

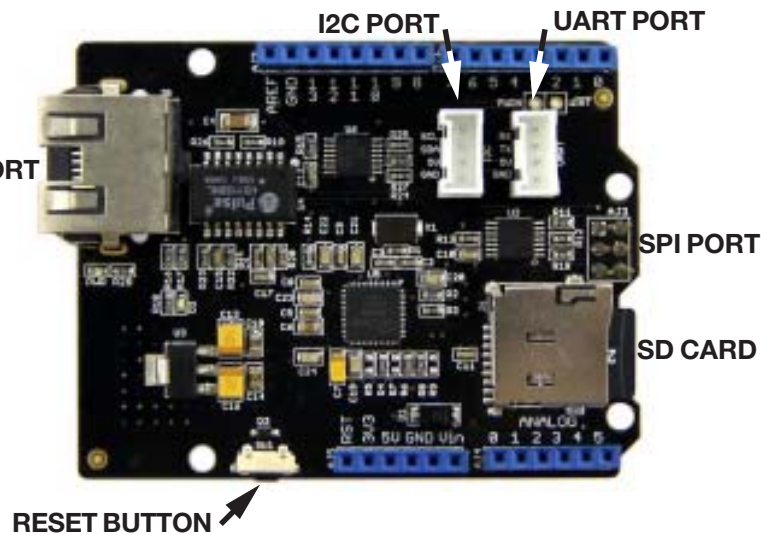
RJ45: Ethernet Port;
HX1198: 10/100BASE-T signal port IC
W5200: a hardwired TCP/IP Ethernet Controller IC
Reset KEY: Resets Ethernet shield and Arduino

Arduino Pin Assignment:

D4: SD card chip select
D10: W5200 Chip Select
D11: SPI MOSI
D12: SPI MISO
D13: SPI SCK

NOTE:

Both the W5200 and the SD card connect to Arduino using the SPI bus.
ONLY 1 can be used at a time
Pin 10 and pin 4 are chip select pins for W5200 and SD slot. They cannot be used as general I/O



USEFUL LINKS FOR DOWNLOADS

https://github.com/Seeed-Studio/Ethernet_Shield_W5200

<https://www.arduino.cc/en/Main/Software?>

http://www.wiznet.io/wp-content/uploads/wiznethome/Chip/W5200/Documents/W5200_DS_V140E.pdf

Information including Drawings, Schematics, Links and Code (Software) Supplied or Referenced in this Document is supplied by MPJA inc. as a service to our customers and accuracy or usefulness is not guaranteed nor is it an Endorsement of any particular part, supplier or manufacturer. Use of information and suitability for any application is at users own discretion and user assumes all risk.

Information Subject to Change Without Notice
All rights are retained by the respective Owners/Author(s)



MARLIN P. JONES & ASSOC., INC.

P.O. Box 530400 Lake Park, FL 33403
800-652-6733 FAX 561-844-8764
WWW.MPJA.COM