



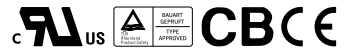
31507-PS

65W Triple Output Switching Power Supply

PT-65B

**■ Features :**

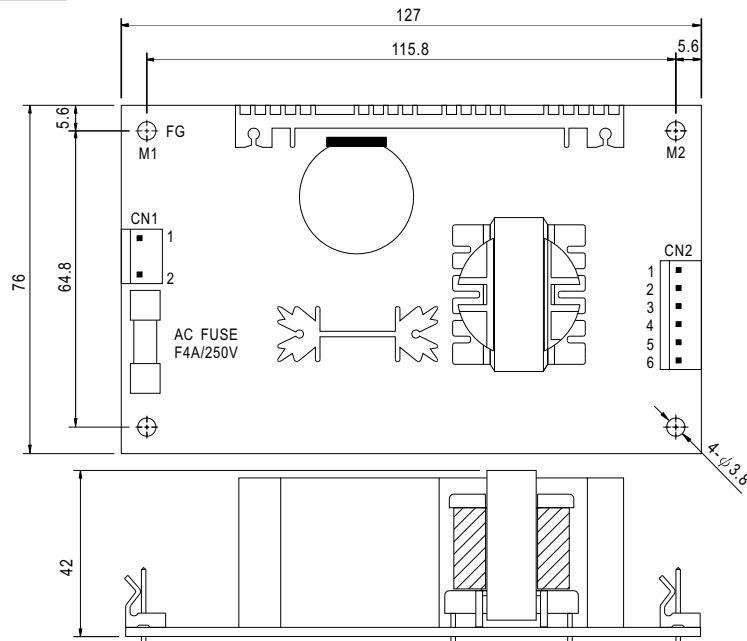
- Universal AC input/Full range
- Low leakage current<0.5mA
- Protections: Short circuit / Overload / Over voltage
- Cooling by free air convection
- 100% full load burn-in test
- Fixed switching frequency at 65KHz
- 2 years warranty

**SPECIFICATION**

MODEL		PT-65B				
OUTPUT	OUTPUT NUMBER	CH1	CH2	CH3		
	DC VOLTAGE	5V	12V	-12V		
	RATED CURRENT	5.5A	2.5A	0.5A		
	CURRENT RANGE	0.4 ~ 7A	0.2 ~ 3.2A	0 ~ 0.7A		
	RATED POWER	63.5W				
	OUTPUT POWER (max.)	Rated output power for convection; 72W with 18CFM min. Forced air				
	RIPPLE & NOISE (max.) Note.2	50mVp-p	120mVp-p	100mVp-p		
	VOLTAGE ADJ. RANGE	CH1:4.75 ~ 5.5V				
	VOLTAGE TOLERANCE Note.3	±4.0%	±7.0%	±5.0%		
	LINE REGULATION	±1.0%	±2.0%	±1.0%		
	LOAD REGULATION	±3.0%	±4.0%	±1.0%		
SETUP, RISE TIME	800ms, 20ms at full load					
HOLD UP TIME (Typ.)	60ms at full load					
INPUT	VOLTAGE RANGE	90 ~ 264VAC	127 ~ 370VDC			
	FREQUENCY RANGE	47 ~ 440Hz				
	EFFICIENCY(Typ.)	77%				
	AC CURRENT (Typ.)	1.5A/115VAC	0.9A/230VAC			
	INRUSH CURRENT (Typ.)	COLD START 20A/115VAC		40A/230VAC		
	LEAKAGE CURRENT	<0.75mA				
PROTECTION	OVERLOAD	73 ~ 95W rated output power				
		Protection type : Hiccup mode, recovers automatically after fault condition is removed.				
	OVER VOLTAGE	5.75 ~ 6.75VDC on CH1				
		Protection type : Hiccup mode, recovers automatically after fault condition is removed.				
ENVIRONMENT	WORKING TEMP.	-10 ~ +60°C (Refer to output load derating curve)				
	WORKING HUMIDITY	20 ~ 90% RH non-condensing				
	STORAGE TEMP., HUMIDITY	-20 ~ +85°C, 10 ~ 95% RH				
	TEMP. COEFFICIENT	±0.04%/°C (0 ~ 50°C) on +5V output				
	VIBRATION	10 ~ 500Hz, 2G 10min./1cycle, Period for 60min.each along X, Y, Z axes				
SAFETY & EMC (Note 4)	SAFETY STANDARDS	UL60950-1, TUV EN60950-1 Approved				
	WITHSTAND VOLTAGE	I/P-O/P:3KVAC I/P-FG:1.5KVAC O/P-FG:0.5KVAC 1min.				
	ISOLATION RESISTANCE	I/P-O/P, I/P-FG, O/P-FG:100M Ohms/500VDC				
	EMI CONDUCTION & RADIATION	Compliance to EN55022 (CISPR22) Class B				
	HARMONIC CURRENT	Compliance to EN61000-3-2,-3				
	EMS IMMUNITY	Compliance to EN61000-4-2,3,4,5,6,8,11; ENV50204, EN55024, Light industry level, criteria A				
OTHERS	MTBF	277.2K hrs min. MIL-HDBK-217F (25°C)				
	DIMENSION	127*76*42mm (L*W*H)				
	PACKING	0.25Kg; 54pcs/15.9Kg/1.35CUFT				
NOTE	<p>1. All parameters NOT specially mentioned are measured at 230VAC input, rated load and 25°C of ambient temperature.</p> <p>2. Ripple & noise are measured at 20MHz of bandwidth by using a 12" twisted pair-wire terminated with a 0.1uf & 47uf parallel capacitor.</p> <p>3. Tolerance : includes set up tolerance, line regulation and load regulation.</p> <p>4. The power supply is considered a component which will be installed into a final equipment. The final equipment must be re-confirmed that it still meets EMC directives.</p> <p>5. Mounting holes M1 and M2 should be grounded for EMI purposes.</p>					

Mechanical Specification

Unit:mm



AC Input Connector (CN1) : Molex 5277-02 or equivalent

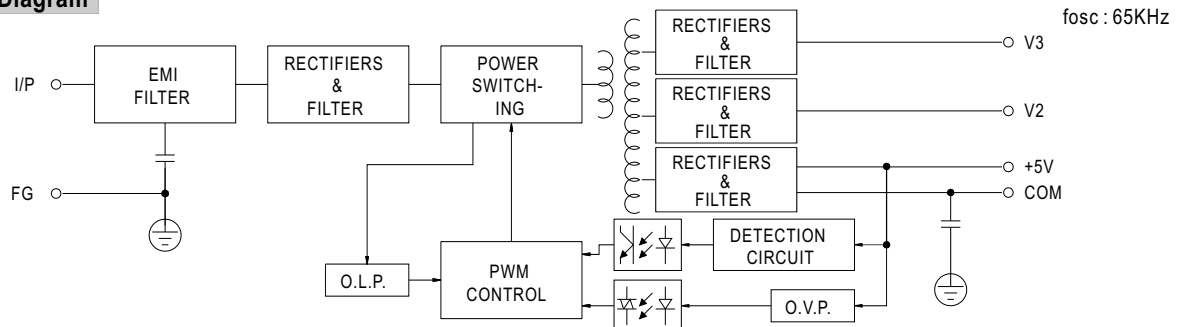
Pin No.	Assignment	Mating Housing	Terminal
1	AC/N	Molex 5195 or equivalent	Molex 5194 or equivalent
2	AC/L		

DC Output Connector (CN2) : Molex 5273-06 or equivalent

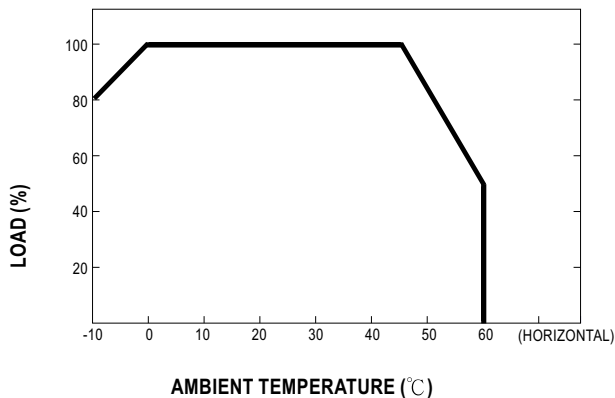
Pin No.	Assignment	Mating Housing	Terminal
1	V2	Molex 5195 or equivalent	Molex 5194 or equivalent
2,3	+5V		
4,5	COM		
6	V3		

※PIN2:+5V PIN3,4,5:COM only for PT-65D

Block Diagram



Derating Curve



Static Characteristics (B)

