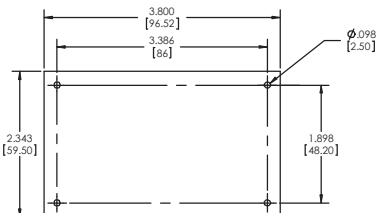
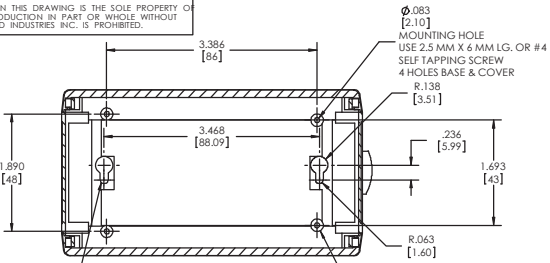
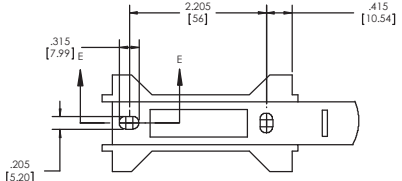


THE INFORMATION CONTAINED IN THIS DRAWING IS THE SOLE PROPERTY OF BUD INDUSTRIES INC. ANY REPRODUCTION IN PART OR WHOLE WITHOUT THE WRITTEN PERMISSION OF BUD INDUSTRIES INC. IS PROHIBITED.

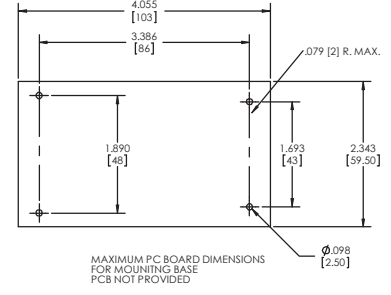
| | |
|-----------------|-----------|
| PJB202 assembly | |
| ISSUE | REVISIONS |
| | |



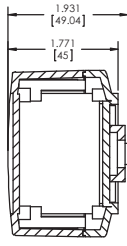
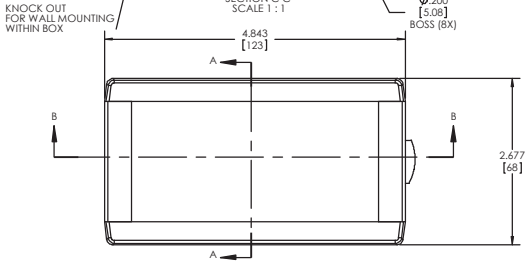
MAXIMUM PC BOARD DIMENSIONS FOR COVER PCB NOT PROVIDED



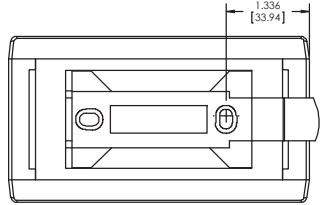
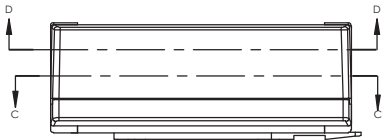
MOUNTING RAIL SLIDES INTO BASE OF BOX UNIT FOR EASE OF ASSEMBLY. MOUNT PLATE TO SURFACE THEN ASSEMBLE BOX TO MOUNTING PLATE



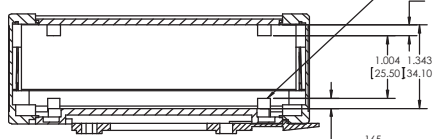
MAXIMUM PC BOARD DIMENSIONS FOR MOUNTING BASE PCB NOT PROVIDED



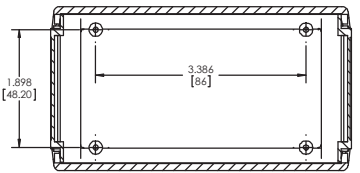
SECTION A-A SCALE 1:1



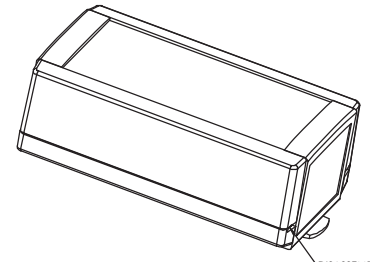
TOP OF MOUNTING BOSS



SECTION B-B SCALE 1:1



SECTION D-D SCALE 1:1

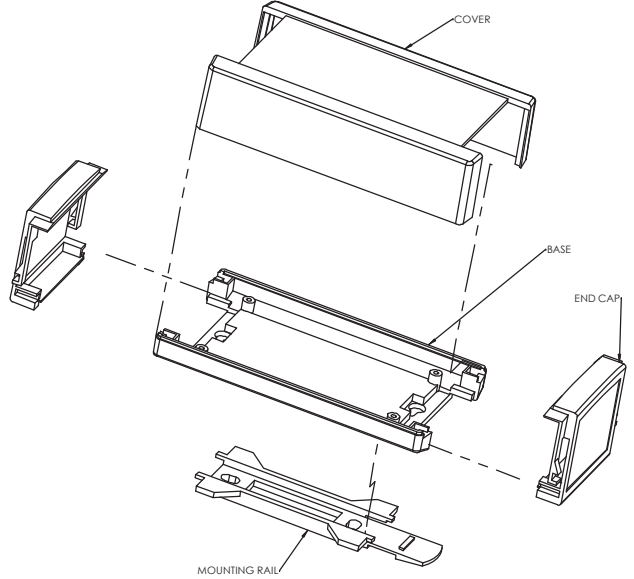


DISASSEMBLY INSTRUCTIONS:
1) PUSH TABS INWARD AS SHOWN IN ISO VIEW OF ASSEMBLED BOX.
2) PULL COVER STRAIGHT UP AS SHOWN IN EXPLODED VIEW
3) SLIDE END CAPS OUT AS SHOWN IN EXPLODED VIEW, GROOVES IN THE END CAP FIT INTO KEYS ON BODY.

TO ASSEMBLE BOX, REVERSE THE PROCEDURE OUTLINED ABOVE.

MOUNTING BOX TO SURFACE:
1) FASTEN MOUNTING RAIL TO SURFACE USING SCREWS.
2) ASSEMBLE BOX TO MOUNTING RAIL BY SLIDING BOX INTO PLACE OVER THE MOUNTING RAIL.

MATERIAL:
ABS PLASTIC UL94-HB
TEXTURE:
COVER, BODY, AND END CAPS ARE TEXTURED
MOUNTING RAIL IS SMOOTH
COLOR:
COVER, BODY, AND MOUNTING RAIL ARE BONE GREY
END CAPS ARE GREY



| PARTS LIST | | BUD INDUSTRIES INC. | |
|------------|---------------|---------------------|----------|
| QUANTITY | DESCRIPTION | DATE | BY |
| 1 | COVER | RD | 11-12-08 |
| 1 | BASE | | |
| 1 | MOUNTING RAIL | | |
| 2 | END CAP | | |

| | | | | |
|------|---------|----------------------|------|----|
| QTY. | USED ON | DO NOT SCALE DRAWING | DATE | BY |
| | | | | |