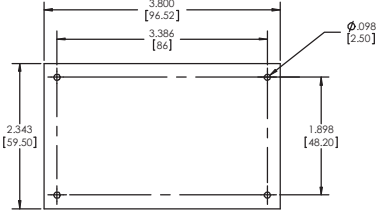
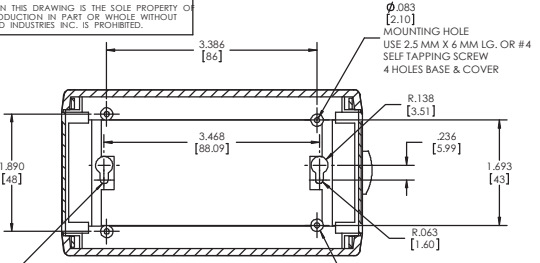
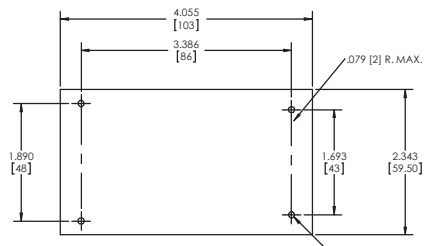
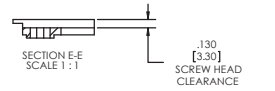
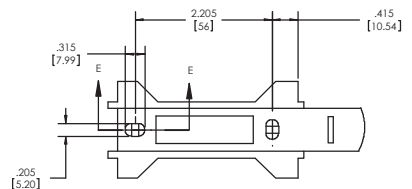


THE INFORMATION CONTAINED IN THIS DRAWING IS THE SOLE PROPERTY OF BUD INDUSTRIES INC. ANY REPRODUCTION IN PART OR WHOLE WITHOUT THE WRITTEN PERMISSION OF BUD INDUSTRIES INC. IS PROHIBITED.

ISSUE	PJ8201 assembly
REVISIONS	



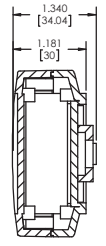
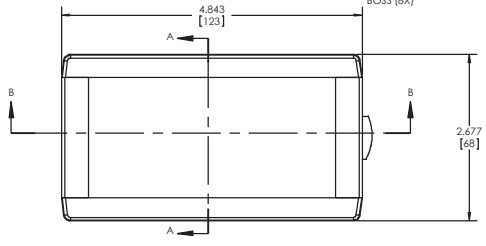
MAXIMUM PC BOARD DIMENSIONS FOR COVER PCB NOT PROVIDED



MAXIMUM PC BOARD DIMENSIONS FOR MOUNTING BASE PCB NOT PROVIDED

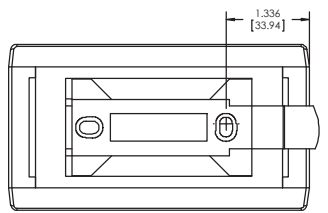
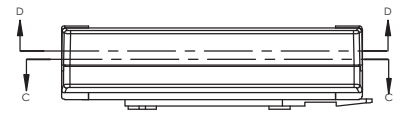
KNOCK OUT FOR WALL MOUNTING WITHIN BOX

SECTION C-C SCALE 1:1

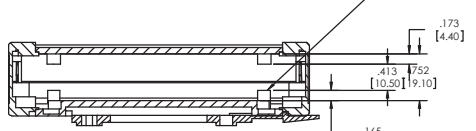


SECTION A-A SCALE 1:1

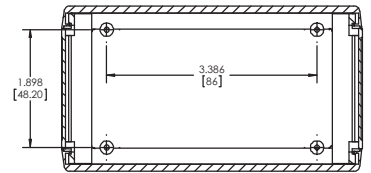
MOUNTING RAIL SLIDES INTO BASE OF BOX UNIT FOR EASE OF ASSEMBLY. MOUNT PLATE TO SURFACE THEN ASSEMBLE BOX TO MOUNTING PLATE.



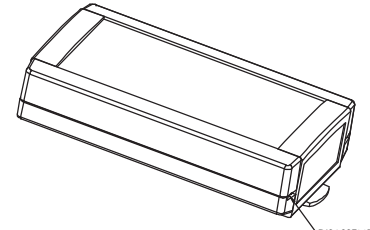
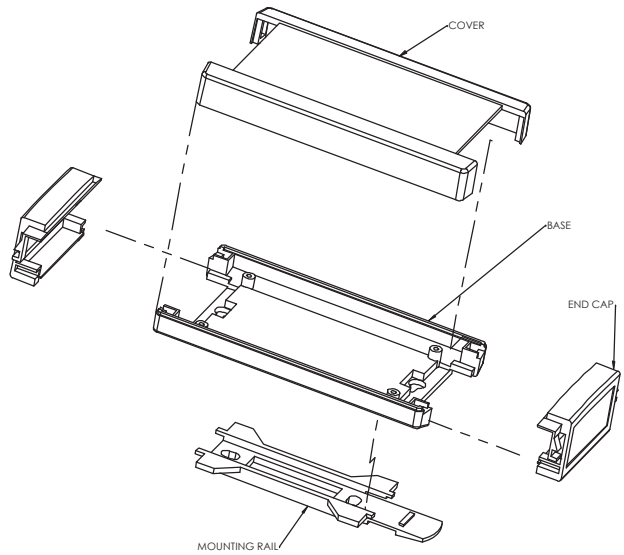
TOP OF MOUNTING BOSS



SECTION B-B SCALE 1:1



SECTION D-D SCALE 1:1



DISASSEMBLE BY PUSHING THESE TABS INWARD, PULL COVER UP, PULL END CAPS OUT.

DIS-ASSEMBLY INSTRUCTIONS:

- 1) PUSH TABS INWARD AS SHOWN IN ISO VIEW OF ASSEMBLED BOX.
- 2) PULL COVER STRAIGHT UP AS SHOWN IN EXPLODED VIEW
- 3) SLIDE END CAPS OUT AS SHOWN IN EXPLODED VIEW, GROOVES IN THE END CAP FIT INTO KEYS ON BODY.

TO ASSEMBLE BOX, REVERSE THE PROCEDURE OUTLINED ABOVE.

MOUNTING BOX TO SURFACE:

- 1) FASTEN MOUNTING RAIL TO SURFACE USING SCREWS.
- 2) ASSEMBLE BOX TO MOUNTING RAIL BY SLIDING BOX INTO PLACE OVER THE MOUNTING RAIL.

**MATERIAL:**  
 ABS PLASTIC UL94-HB  
 TEXTURE:  
 COVER: BODY, AND END CAPS ARE TEXTURED  
 MOUNTING RAIL IS SMOOTH  
 COLOR:  
 COVER: BODY, AND MOUNTING RAIL ARE BONE GREY  
 END CAPS ARE GREY

PARTS LIST

QUANTITY	DESCRIPTION	REV	DATE	BY	CHKD
	COVER	RD	11-12-08		
	BASE				
	END CAP				
	MOUNTING RAIL				

**BUD INDUSTRIES INC.**

**SNAP TOGETHER BOX, RAIL MOUNT**

4.84 [123] X 2.68 [68] X 1.18 [30]

QTY. USED ON

DO NOT SCALE DRAWING

PJ-8201

REV. 001