

DC Digital Multi-function Meter

Model: PZEM-025

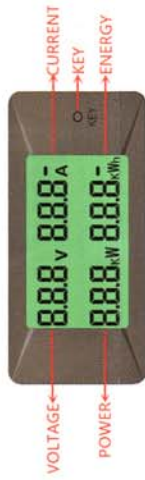
A. Function

Measure DC voltage, current, power, energy and display with LCD.

B. Display

I. Display interface

HTN wide view LCD: voltage + current + power + energy + green backlight(See Figure 1)



II. Display instruction

1. Voltage

Measurement range: 0~300V(Independent power supply: DC 5-12V)/8-300V(Direct power supply)

Display format: <10V display such as:1.00V

<100V display such as: 10.0V

≥100V display such as: 100V

Accuracy: ±1%

2. Current

Measurement range: ±0-300A(has 50A, 100A, 200A, 300A four type can be choosed)

Display format: <10A display such as:1.00A

<100A display such as: 10.0A

≥100A display such as: 100A

Starting measurement: ±0.02A

Accuracy: ±1%

3. Power

Measurement range: 0~90kW

Display format: <10W display such as: 1.00W

<100W display such as: 10.0W

<1000W display such as: 100W

<10000W display such as: 1.00kW

≥10000W display such as: 10.0kW

Starting measurement: 0.1W

Accuracy: ±1%

4. Energy

Measurement range: ±0-999kWh

Display format: <1kWh display such as: 100Wh

<10kWh display such as: 1.00kWh

<100kWh display such as: 10.0kWh

<1000kWh display such as: 1.00kWh

Overflow will maintain data, unless reset by yourself.

Accuracy: ±1%

Note: 1Wh=0.001kWh

C. Other Function

1. Backlight control

Short press the key to turn on or turn off the backlight.

2. Reset Energy

Long press the key over than 3 seconds can reset the energy.

3. Current Indication

Current has direction indication, if there is "-", it means the current is reverse direction, otherwise it is forward direction. (See Figure 2)

4. Energy Indication

Energy has direction indication, if there is "-", it means the energy is reverse direction, otherwise it is forward direction.

The energy direction is judged according to the

current direction, if the current is positive, the energy will increase, maximum is 999kWh, overflow will be maintained, unless you reset it; if the current is reverse, the energy will decrease, maximum is -999kWh, overflow will be maintained, unless you reset it (See Figure 2)



Figure 2 Direction Indication

5. Working Mode

Direct power supply: Direct supply by test voltage, test range is: 8-300V

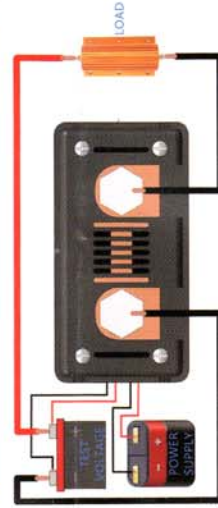


Figure 3 Power Supply Diagram

6. Data Preservation

Energy data and backlight state can be saved when

D. Wiring Diagram

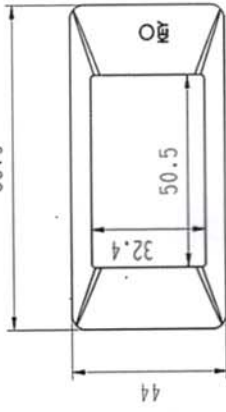


50/100/200/300A

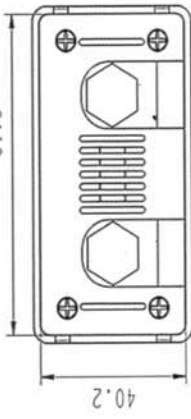
Figure 4 wiring diagram

E. Dimension Diagram (mm)

85.3



81.3



27.8

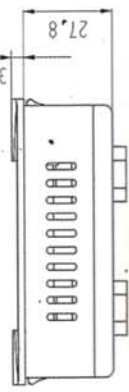


Figure 5 Boundary Dimension

81.7

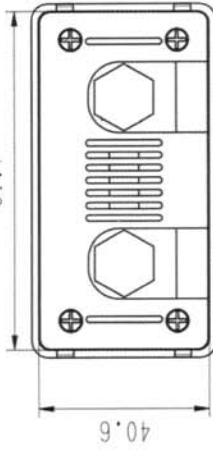


Figure 6 Hole Size

F. Attention

1. This product is suitable for indoor use.
2. This product is suitable for DC.
3. The measurement voltage and ampere shall not exceed the calibration range.
4. Make sure the wiring is correct.