

36642-OP

Right Angle Opto-Interrupter/Switch - NPN Current Sink

General purpose optical switch with Open Collector NPN Output.

Can be connected for Dark (Blocked)-ON or Light-ON (Pass) operation.

Red LED Operation indicator.

Power: 5-24VDC

Current: 35mA

Output Current Sink: 100mA Max

Slot width: 5mm

Slot depth: 9mm

Light Source: 940nm IR Led

Connections: 4 Solder Tail

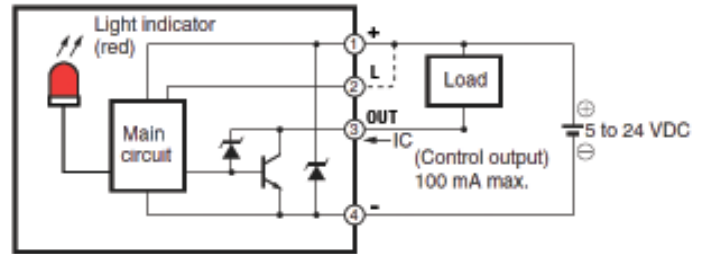
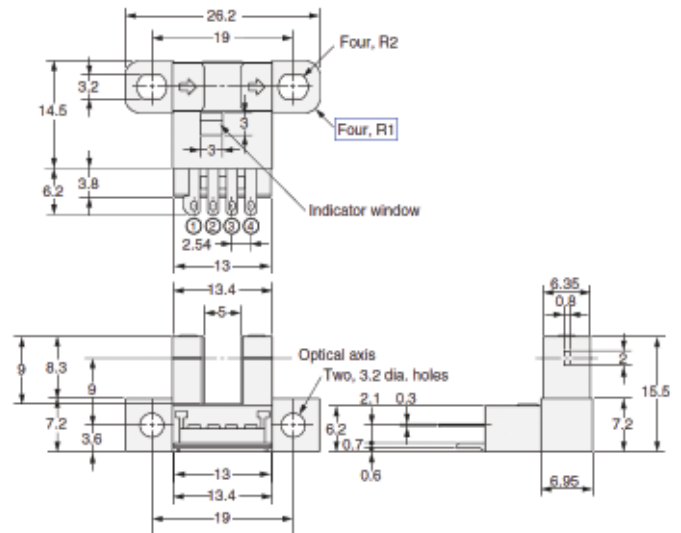
1: + Power

2: **L** Select Dark (Blocked)-ON or Light (Pass) ON

3: **OUT**: NPN Open Collector

4: - Power Return

L: 3/4" Body **W**: 1" **T**: 3/4" **WT**: .01



Output configuration	Timing chart	Terminal connection
Light-ON	<p>Pass Blocked: [Green bar ON, Green bar OFF]</p> <p>LED indicator (red): ON [Red bar ON, Red bar OFF], OFF [Red bar ON, Red bar OFF]</p> <p>Output transistor state: ON [Green bar ON, Green bar OFF], OFF [Green bar ON, Green bar OFF]</p> <p>Load (ex. Relay): Operate [Green bar ON, Green bar OFF], Release [Green bar ON, Green bar OFF]</p>	Connect 1 (Ⓛ) To 2 (⊕)
Dark-ON	<p>Pass Blocked: [Green bar ON, Green bar OFF]</p> <p>LED indicator (red): ON [Red bar ON, Red bar OFF], OFF [Red bar ON, Red bar OFF]</p> <p>Output transistor state: ON [Green bar ON, Green bar OFF], OFF [Green bar ON, Green bar OFF]</p> <p>Load (ex. Relay): Operate [Green bar ON, Green bar OFF], Release [Green bar ON, Green bar OFF]</p>	Do Not Connect 1 (Ⓛ) To 2 (⊕)

Information including Drawings, Schematics, Links and Code (Software) Supplied or Referenced in this Document is supplied by MPJA inc. as a service to our customers and accuracy or usefulness is not guaranteed nor is it an Endorsement of any particular part, supplier or manufacturer. Use of information and suitability for any application is at users own discretion and user assumes all risk.

Information Subject to Change Without Notice
All rights are retained by the respective Owners/Author(s)



MARLIN P. JONES & ASSOC., INC.

P.O. Box 530400 Lake Park, FL 33403

800-652-6733 FAX 561-844-8764

WWW.MPJA.COM