

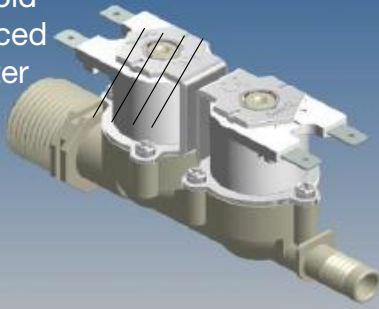
# 35867-HD

## Dual Solenoid Valve Assembly

**R 257**

120VAC Coil

Solenoid  
Replaced  
By Filter



### CLASSIFICATION

Type	Dual
Geometry	180°

### WORKING SPECIFICATIONS

Working pressure	max 10 bar
Room temperature	0 ÷ 60° C
Fluid temperature	25° C (ED 100%); 60° C (ED 100%); 90° C (ED 60%)
Flow direction	Unidirectional
Rated diameter	Ø 8 mm
Elect. Pilot/Control	Normally Closed

### PHYSICAL SPECIFICATIONS

Valve body	PA 6,6 30% glass fiber
Diaphragm	NBR (buna); Silicone
Core	Stainless steel
Spring	Stainless steel
Assembly	With screws

### HYDRAULIC CONNECTIONS

Inlet connections	G 3/4" Male Thread
Outlet connections	Hose Tail Ø 10 mm

### INSTALLATION

The valve can be installed in any position, with plastic or metal bracket, without compromising the functionality.

**RV**



### WORKING SPECIFICATIONS

Room temperature	0 ÷ 60° C
Fluid temperature	25° C
Flow direction	Unidirectional
Filtration	60 Mesh/250 Micron
Filtration	120 Mesh/125 Micron
Working pressure	Max in 10 bar

### PHYSICAL SPECIFICATIONS

Filter body	PA 6,6 30% fiber glass
Cap	PA 6,6 30% fiber glass
Gasket	Silicone
O-Ring	NBR (buna); Silicone (MVQ)
Filter Mesh	Stainless Steel
Nominal diameter	DN 11 mm
Valve body	Any R Series body
Assembly	With screws for inspection

### HYDRAULIC CONNECTIONS

Inlet	Any option from R Series
Outlet	Any option from R Series

### APPLICATIONS

The flow filter RPE is used to protect from particles and impurities in the water in many applications: household apps, irrigation, water dispenser, hydrosanitary, Industrial ovens

### CERTIFICATION MARKS



**KTW**



Information including Drawings, Schematics, Links and Code (Software) Supplied or Referenced in this Document is supplied by MPJA inc. as a service to our customers and accuracy or usefulness is not guaranteed nor is it an Endorsement of any particular part, supplier or manufacturer. Use of information and suitability for any application is at users own discretion and user assumes all risk.

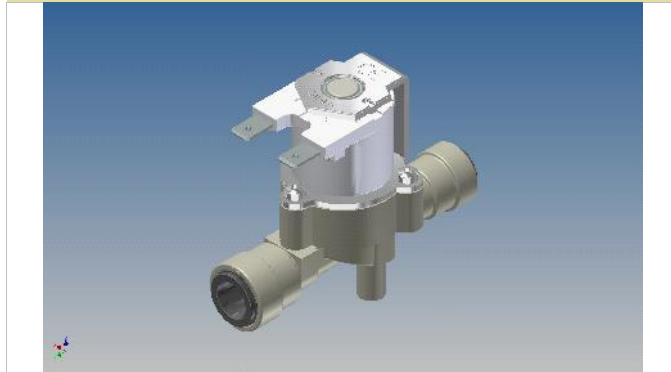
All rights are retained by the respective Owners/Author(s)  
Information is Subject to Change Without Notice

# 35867-HD

## Dual Solenoid Valve Assembly

**R 165**

**120VAC Coil**



### CLASSIFICATION

Type	Single
Geometry	180°

### WORKING SPECIFICATIONS

Working pressure	0,2 ÷ 10 bar
Room temperature	0 ÷ 60°C
Fluid temperature	25°C; 60°C; 90°C
Duty cycle	ED 100%; ED 60%(90°C)
Flow direction	Unidirectional
Nominal diameter	DN 8 mm
Control	Normakky Closed

### PHYSICAL SPECIFICATIONS

Valve body	PA 6,6 30% fiber glass
Diaphragm and gaskets	EPDM; NBR (buna); Silicone (MVQ)
Core	Stainless Steel
Spring	Stainless Steel
Assembly	With screws for inspection

### HYDRAULIC CONNECTIONS

Inlet	Quick connection JG 8 mm
Outlet	Quick connection JG 10 mm

### ELECTRICAL CONNECTIONS

Electric connect 1	Male Faston 6,3 x 0,8 mm
Electric connect 2	Unipolar cables max 5 m
Electric connect 3	Bipolar cables max 5 m

### APPLICATIONS

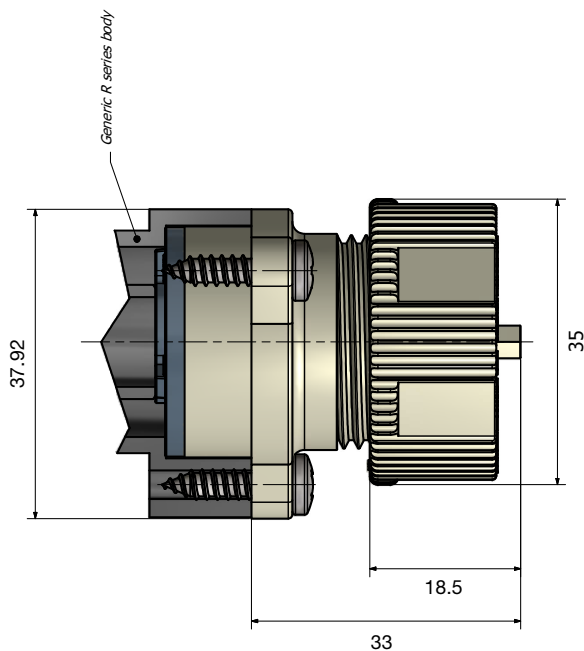
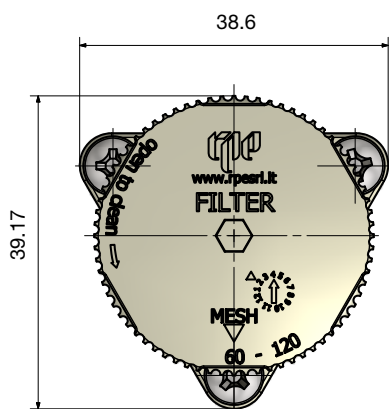
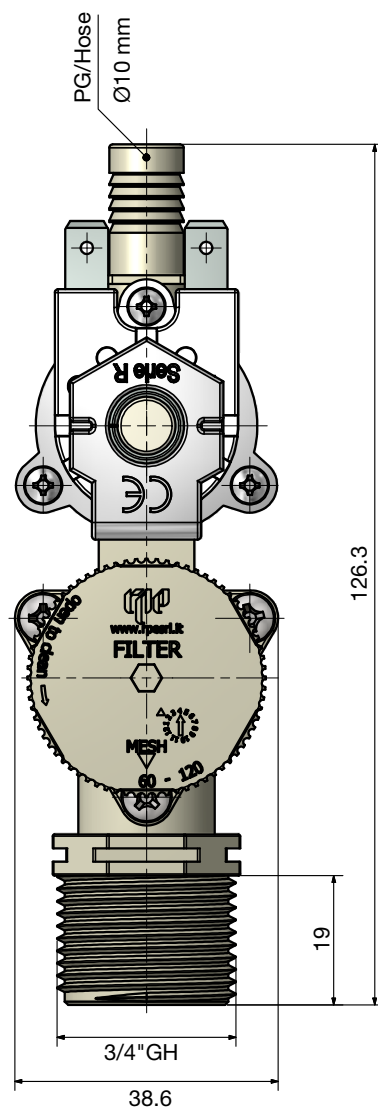
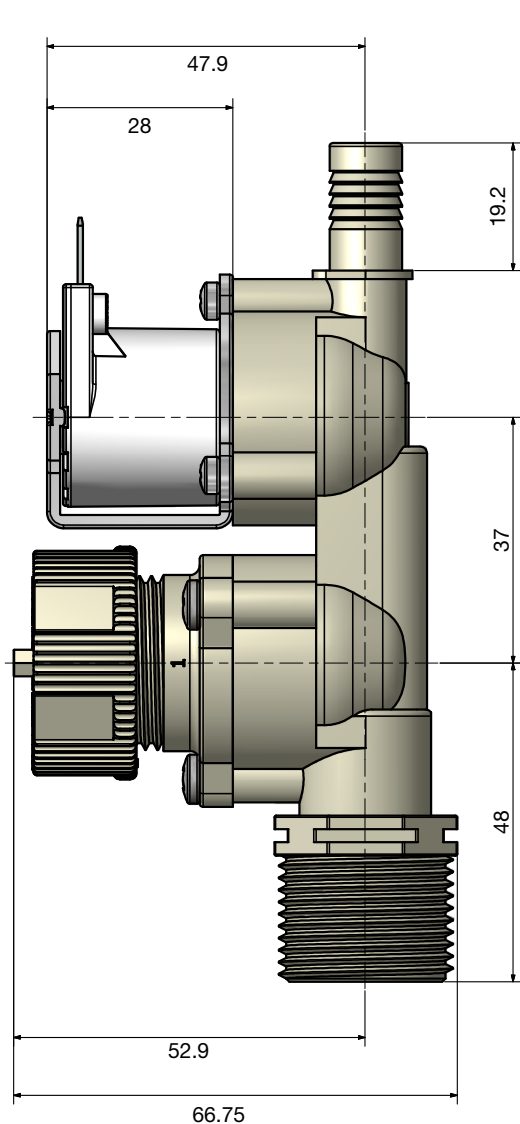
The series R for household apps can be used wherever automatic water control is needed. Washing machines and dish washes water filling, Refrigerators, Ice machines, Water dispensers, Industrial ovens, Taps, Hydromassage, Coffee makers.

### CERTIFICATION MARKS




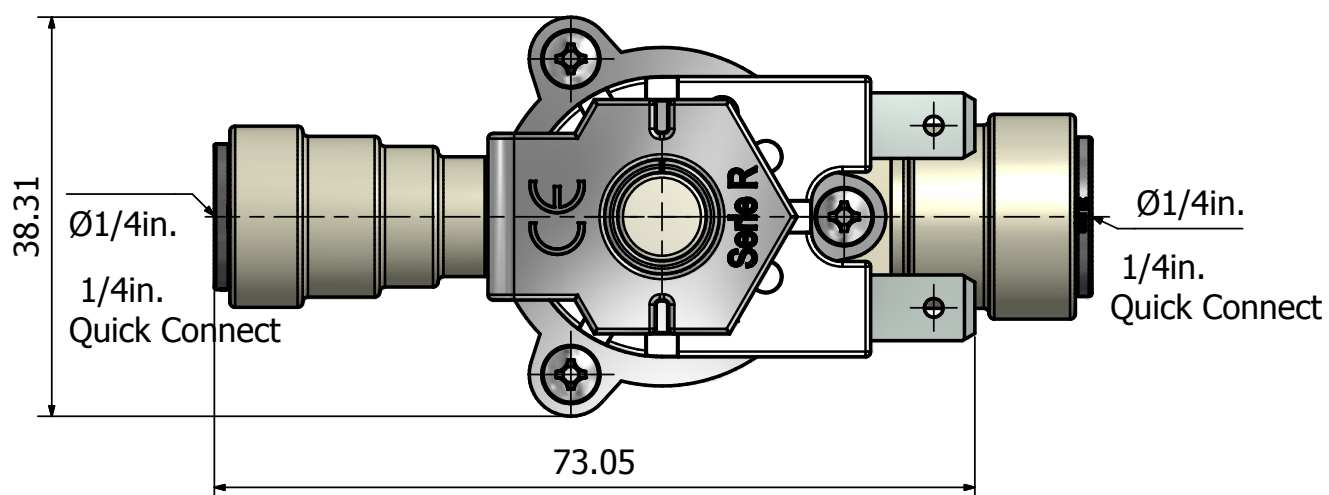
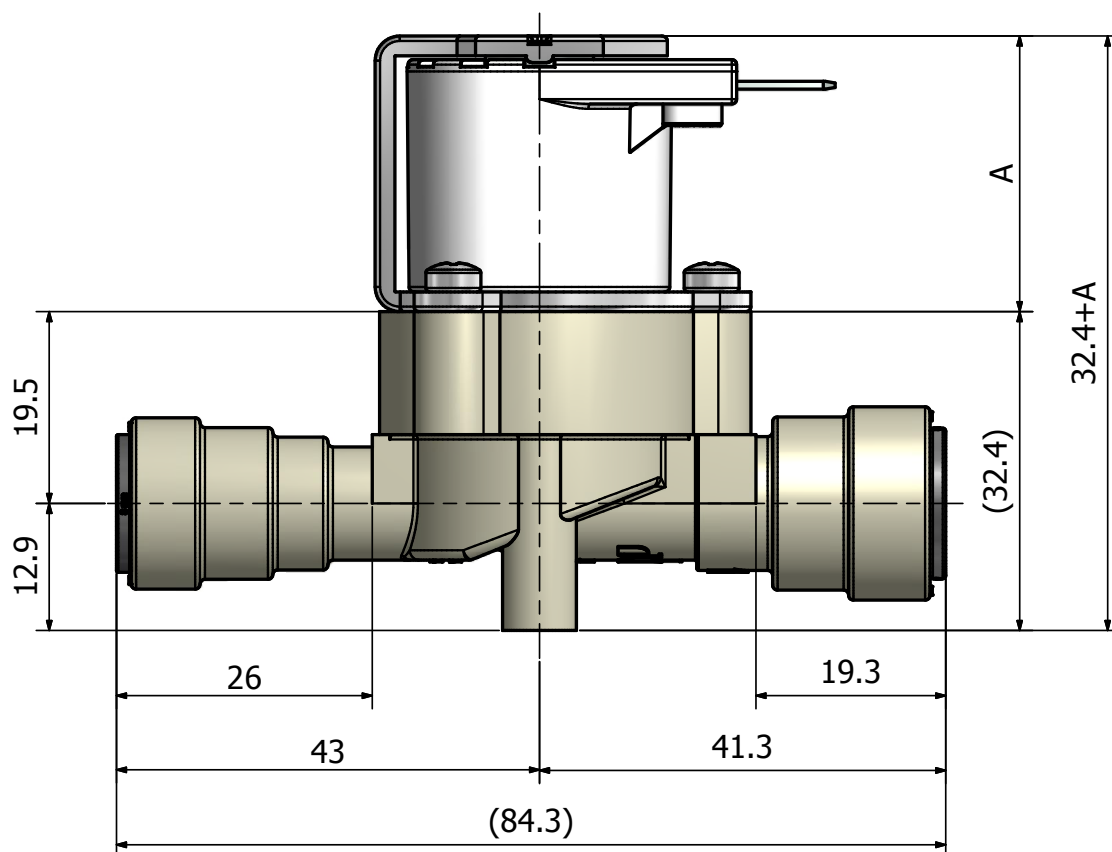
**KTW**






MM unless otherwise noted  
For Reference Only  
Some Dimensions, or Features may not be Present

 <p>ELETTROVALVOLE IDRAULICHE SOLENOID VALVES Tel.: +39 0331 832515 Fax.: +39 0331 832501 www.rpesrl.it - info@rpesrl.it</p>	<p>Assembly, Valve with Filter</p> <p>Serie: <b>R</b></p> <p>Date: 05/22/19 Revisione: 0</p>
--	--



MM unless otherwise noted  
For Reference Only  
Some Dimensions, or Features may not be Present

 <p>ELETTROVALVOLE SOLENOID VALVES Tel.: +39 0331 832515 Fax.: +39 0331 832501 www.rpesrl.it - info@rpesrl.it</p>	<p><b>R165</b></p> <p>Serie: <b>R</b></p>	<p>Date: 14/03/2011 Revisione: 0</p>
---	---	--

## 35867-HD

### Quick Connect Fittings

**NOTE:**

Carefull insertion/removal is required.

Damage to collet, O rings may render fitting unusable.

These fittings are used with high pressure, hard plastic tubing.

They can also be used with copper, brass & other metal tubing

(However the inserted end of metal tubing must be sanded smooth for ~ 3/4 in. )

**For Insertion:**

**Plastic:**

Cut the tubing square with sharp knife and remove all burrs.

Insert inabout 3/4 inch.

Pull the tubing back to make sure is locked.

**Metal:** Saw or cut the end square.

Remove all fragments, burrs etc.

Sand smooth for ~ 3/4 in.

Insert inabout 3/4 inch.

Pull the tubing back to make sure is locked.

**For Removal:**

Remove the locking clip (if used)

With both forefingers press and hold the collet around the tubing while pulling the tubing out.

**Information including Drawings, Schematics, Links and Code (Software) Supplied or Referenced in this Document is supplied by MPJA inc. as a service to our customers and accuracy or usefulness is not guaranteed nor is it an Endorsement of any particular part, supplier or manufacturer. Use of information and suitability for any application is at users own discretion and user assumes all risk.**

**All rights are retained by the respective Owners/Author(s)**

**Information is Subject to Change Without Notice**