

35627-MP

2.0in. Arduino Color LCD Module

2.0in. TFT LCD Graphics Module for controllers.

Uses ILI9225 IC with SPI serial interface

Compatible with 51/ARM/Arduino/ Raspberry-Pi.

Can be plugged into Arduino Mega2560 or Uno R3 directly without wire connections. On-board voltage regulator.

Integrated backlight circuit which controls the backlight and can use the PWM of the arduino to adjust the backlight brightness.

On-board mini SD card expansion connector.

Power: +3.3/5 VDC (On-Board Regulator)

Display Type: 2.0 "TFT"

Resolution: 176*220 RGB pixels

Display mode: Transmissive

Backlight: White LED

Viewing Angle: 12 O'clock

Operating Temp: -20 ° C ~ + 70 ° C

Storage Temp: -30 ° C ~ + 80 ° C

Outline Dimensions: 37.68 * 51.3 * 2.3 mm

L: 2-1/2" **W:** 1-1/2" **T:** 1/2" O/A **WT:** .03



HEADER P1 1x11/ 0.01" Pitch

Pin #	Label	Description
1	VCC	Power Input (3.3V / 5V)
2	GND	Ground
3	GND	Ground
4	NC	No Connection
5	NC	No Connection
6	NC	No Connection
7	CLK	Serial Clock input
8	SDA	Serial Data input
9	RS	Command / Data Selection (0: command; 1: Data)
10	RTD	LCD Reset (Low level Enable)
11	CS Chip	Enable (Low level Active)

Information including Drawings, Schematics, Links and Code (Software) Supplied or Referenced in this Document is supplied by MPJA inc. as a service to our customers and accuracy or usefulness is not guaranteed nor is it an Endorsement of any particular part, supplier or manufacturer. Use of information and suitability for any application is at users own discretion and user assumes all risk.

Information Subject to Change Without Notice
All rights are retained by the respective Owners/Author(s)



MARLIN P. JONES & ASSOC., INC.

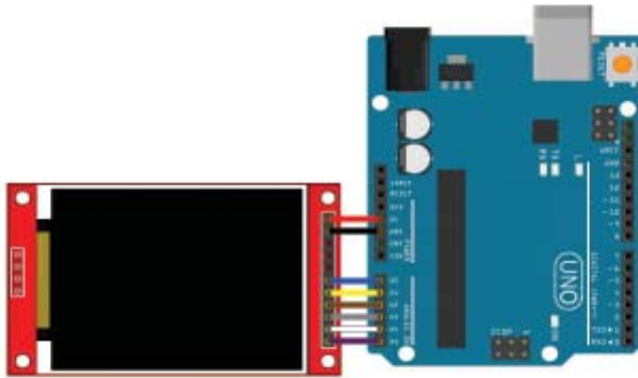
P.O. Box 530400 Lake Park, FL 33403

800-652-6733 FAX 561-844-8764

WWW.MPJA.COM

35627-MP

2.0in. Arduino Color LCD Module



ILI9225 TFT LCD ARDUINO UNO-R3

NOTE:
The LCD Can be Directly
Plug Directly Into The
UNO or MEGA 2560



ILI9225 TFT LCD ARDUINO UNO-R3

HEADER P2 SD Card

Pin #	Label	Alternate Label	Description
1	SD_CS		SD Card Chip Select
2	SD_MOSI	SDO, DI	SPI Bus Data-Input
3	SD_CLK		SPI Bus Clock
4	SD_MISO	SDI, DO	SPI Bus Data-Output

USEFULL LINKS

For Arduino Users

https://github.com/Nkawu/TFT_22_ILI9225

https://www.arduinolibraries.info/libraries/tft_22_ili9225

For Raspberry-Pi Users

https://github.com/nopnop2002/ili9225spi_rpi

Information including Drawings, Schematics, Links and Code (Software) Supplied or Referenced in this Document is supplied by MPJA inc. as a service to our customers and accuracy or usefulness is not guaranteed nor is it an Endorsement of any particular part, supplier or manufacturer. Use of information and suitability for any application is at users own discretion and user assumes all risk.

Information Subject to Change Without Notice
All rights are retained by the respective Owners/Author(s)



MARLIN P. JONES & ASSOC., INC.

P.O. Box 530400 Lake Park, FL 33403
800-652-6733 FAX 561-844-8764
WWW.MPJA.COM