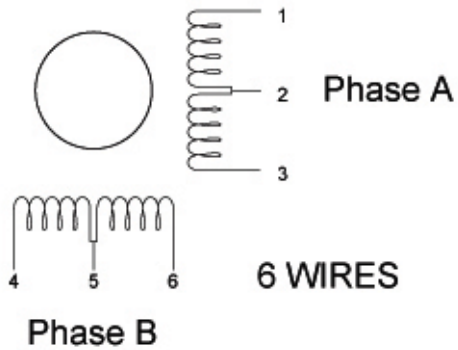
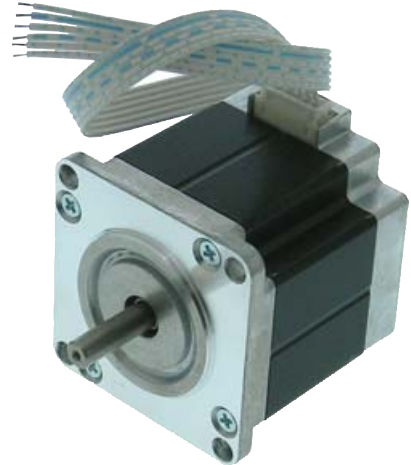


35032-MS

NEMA 23 STEPPER MOTOR

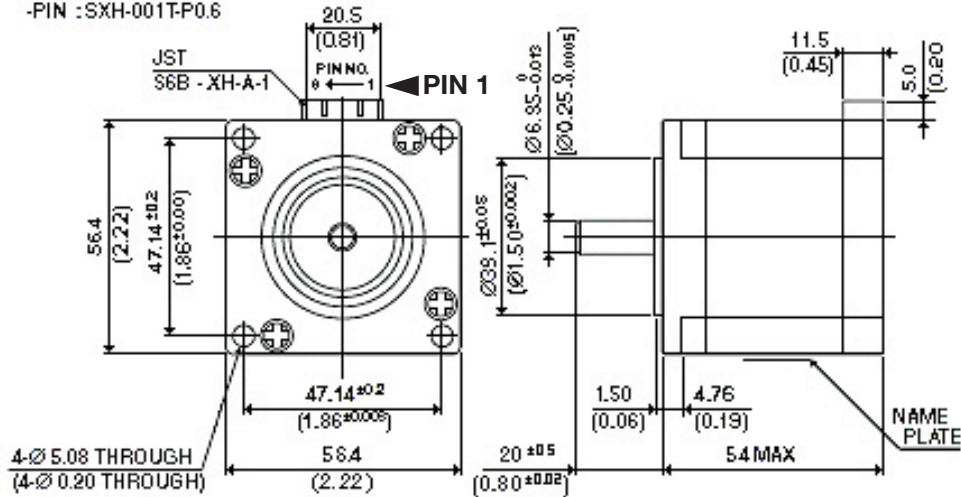
MFG: MIINEBEA
P/N: 23KM-K005-34U
NEMA: 23
COIL: 5VDC/1.5A/3.45 Ohms/2.4mH
TYPE:] 4 Phase Uni-Polar 6 lead
STEP ANGLE: 1.8 deg
 New step motor, 760mNm holding torque.
 6.35mm (.25") X 19mm (.75") steel shaft. 4
 corner mtg. holes.
 9" Pigtail Cable
L: 2-3/16" Body **Sq:** 2-3/16" **WT:** 1.5



6 LEAD CONNECTION

Lead #	1	2	3	4	5	6
Bipolar Half Coil	A	\bar{A}		B	\bar{B}	
Bipolar Series	A		\bar{A}	B		\bar{B}
Unipolar Drive	A	A/C Comm	C	B	B/D Comm	D

* LEAD WIRE SIDE
 -HSS: XHP-6
 -PIN : SXH-001TP0.6



UNIT: $\frac{\text{mm}}{\text{inch}}$

Information including Drawings, Schematics, Links and Code (Software) Supplied or Referenced in this Document is supplied by MPJA inc. as a service to our customers and accuracy or usefulness is not guaranteed nor is it an Endorsement of any particular part, supplier or manufacturer. Use of information and suitability for any application is at users own discretion and user assumes all risk.

All rights are retained by the respective Owners/Author(s)



MARLIN P. JONES & ASSOC., INC.

P.O. Box 530400 Lake Park, FL 33403
 800-652-6733 FAX 561-844-8764
 WWW.MPJA.COM