

34535-MP

Time Delay Generator Board

Mini Time Delay Board.

Can use thru-hole or SMD timing resistor (RT)

Range: ~5.8sec. to 107min Basic

By using P-1 & 2 Time can be extended to ~49min to >900hrs

Starts on the Falling Edge of the trigger pulse (TTL) or SPST-NO switch

Does Not retrigger until the next Falling Edge AFTER timing out

VDD: 3-5VDC

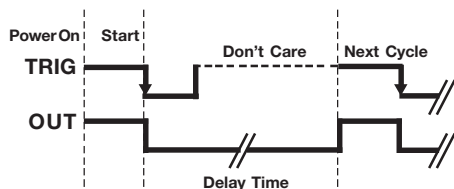
Output: Current Sink: 30mA max.

L: 12mm W: 12mm H: 1mm WT: 001

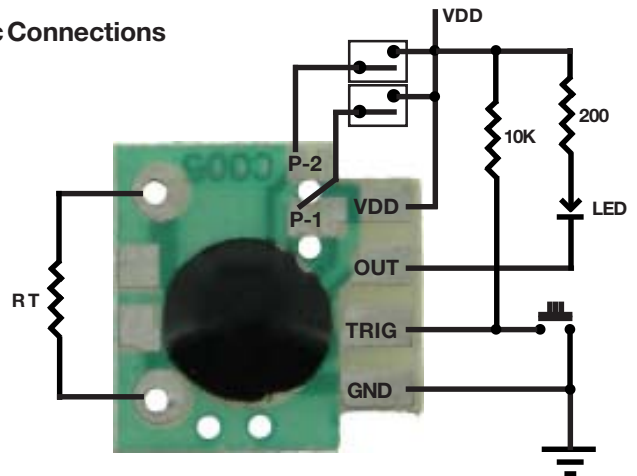
The Time Delay Settings by Resistor Value (RT)

RESISTOR VALUE	OSC. FREQ @3VDC	TIME SEC	OSC. FREQ. @4.5VDC	TIME SEC
10K	1.35MHz	5.8	1.6MHz	4.8
20K	930KHz	8.9	1.05MHz	8.0
30K	723KHz	12.1	800KHz	11.4
51K	480KHz	19.2	517KHz	18
75K	370KHz	26.5	350KHz	25
100K	276KHz	34	289KHz	32
150K	191KHz	49	197KHz	46
200K	149KHz	65	153KHz	60
240K	126KHz	78	129KHz	74
300K	95KHz	96	97KHz	92
390K	79KHz	123	81KHz	119
510K	61KHz	155	62KHz	150
560K	54KHz	175	54KHz	168
620K	51.1KHz	199	51KHz	187
750K	39.7KHz	230	39.9KHz	222
820K	37KHz	255	37KHz	246
1.0M	32KHz	330	32KHz	291
1.5M	21.9KHz	383	21.9KHz	432
2M	16KHz	598	16KHz	568
3M	11KHz	762	11KHz	712
4.7M	7.2KHz	1425	7.2KHz	1165
5.1M	6.3KHz	1631	6.3KHz	1331
10M	3.2KHz	2921	3.2KHz	2621
15M	2.1KHz	4394	2.2KHz	3813
20M	1.8KHz	5160	1.9KHz	4660
22M	1.3KHz	7052	1.3KHz	6452

Timing Diagram



Basic Connections

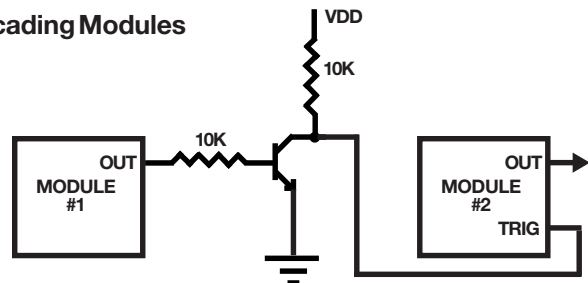


Connecting P-1 P-2 To Increase The Time Delay

P-1 & P-2 CAN BE NOT USED OR CAN BE SELECTED BY JUMPER(S)

Time Multiplier	P-1	P-2
PER CHART	OPEN	OPEN
CHART X 8	VDD	OPEN
CHART X 64	OPEN	VDD
CHART X 512	VDD	VDD

Cascading Modules



Information obtained from or supplied by Mpja.com or Marlin P. Jones and Associates inc. is supplied as a service to our customers and accuracy is not guaranteed nor is it definitive of any particular part or manufacturer. Use of information and suitability for any application is at users own discretion and user assumes all risk.



MARLIN P. JONES & ASSOC., INC.

P.O. Box 530400 Lake Park, FL 33403

800-652-6733 FAX 561-844-8764

WWW.MPJA.COM