

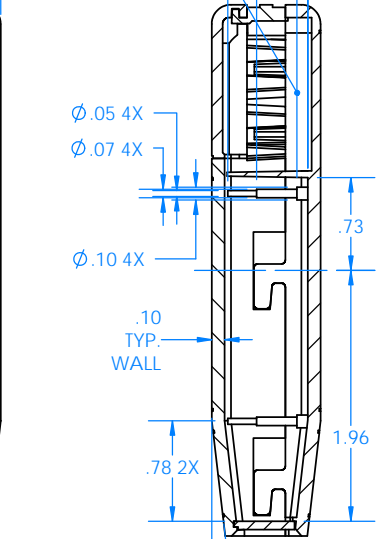
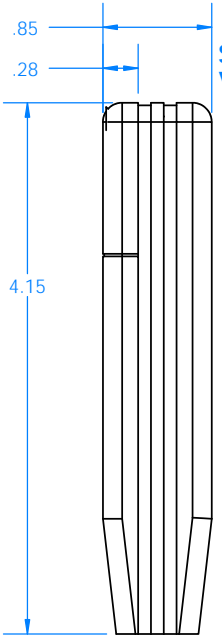
SERPAC M6

Electronic Enclosures

34481-BX

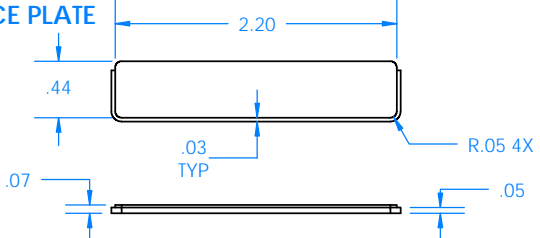
2 AA OR 1 9V BATTERY COMPARTMENT

SIDE 1 VIEW

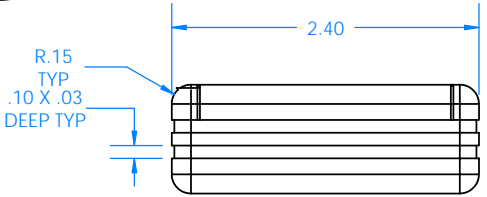


SECTION A-A

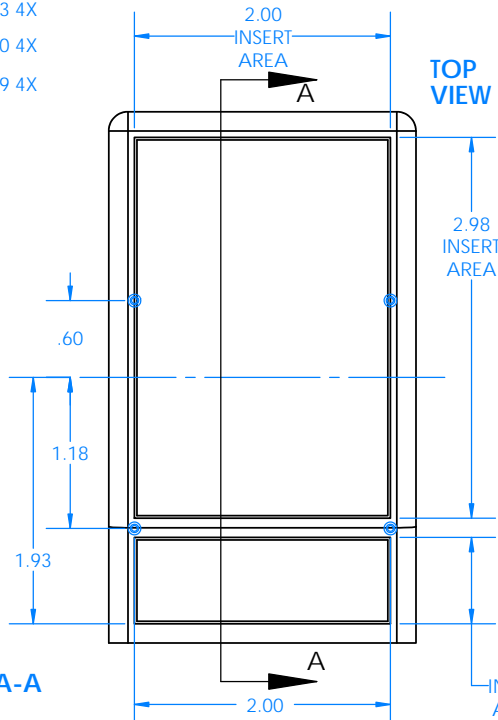
FACE PLATE



FRONT VIEW

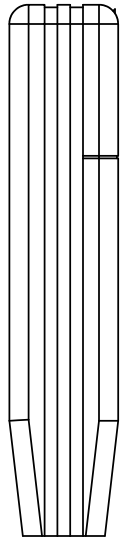


BACK VIEW

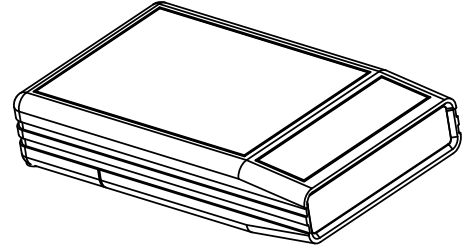
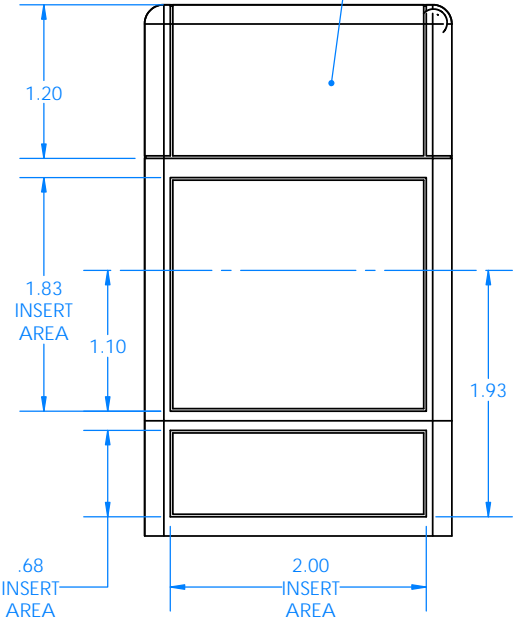


TOP VIEW

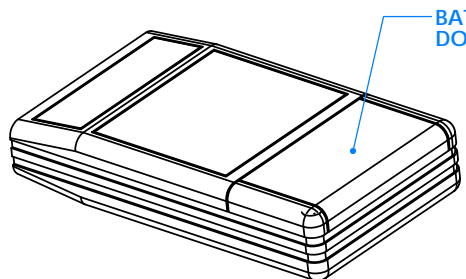
SIDE 2 VIEW



BOTTOM VIEW



BATTERY DOOR



BATTERY DOOR

PART NO.	DESCRIPTION (Included)	ACCESSORIES (Optional)	
4005	TOP	PART NO.	DESCRIPTION
4006	BOTTOM	1030	POCKET CLIP
4007	BATTERY COVER		
4008	FACE PLATE		
72	BATTERY CLIP (single)		
73	BATTERY CLIP (double)		
6003	#2 X .5" SCREWS (2)		
4013	9V INSERT (spacer)		

Notes: Enclosure weight .099 lbs / 45 gm
 1) Enclosure meets or exceeds IP40 and NEMA 1
 2) All components are RoHS Compliant.
 3) Circuit Board drawings can be download at: www.Serpac.com Accessories page.