

33026 & 33038-MI

Scrolling LED Name Tags

Programmable scrolling LED name tag ideal for restaurants, trade shows, reunions. Put names, promotions, web addresses, anything you want. Internal rechargeable Li-ion battery for repeated use. Input your text & graphics by USB from your PC. Files can be Saved for future use.

Matrix: 11 X 44 LEDs

Memory: 8 messages with up to 190 characters/message. Up to 6 characters displayed at a time. (Language/case Dependent)

Run Time: >15hr. @ 25% Brightness/>8hr. @100%

Charge Time: <3hr.

Programming/Charge Port: USB Mini B

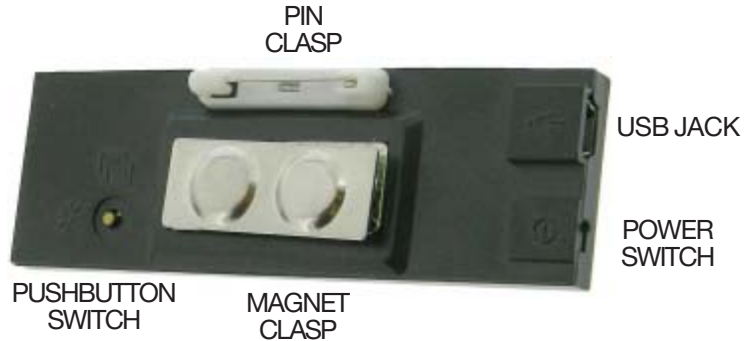
L: 3.7" W: 1.18" T: 0.4" WT: .06

SETUP & PROGRAMMING SEE Pages 2 & 3

- 1: Load Supplied CD into your computer
Open to view Files
- 2: Select "Mini LED. exe"
File loads & opens to Main Screen
Should automatically default to English
Select different language as needed
- 3: Attach Supplied USB Cable to your computer port
Connect USB cable to Mini B on Name Tag
- 4: Tag will activate (regardless of ON/OFF switch)
Will show factory default info. or last active message(s)
- 5: Select the message line you want to write into
Select EDIT (FORMAT) Menu
Select TXT/RTF/Image/GIF
Double Click in Text Bar.
Text screen will open
Type or load information
Click OK (Returns to Main Screen)
- 6: Select features such Speed, Dwell etc. by clicking on Icons next to Message Bar
- 7: When all choices are made;
Select "SEND" on "Tool" Bar to download to Tag
You may select "FILE" on "Menu" bar to "Save", "Save As" etc. to keep your file for future use or to down load to another Tag

OPERATION

- 1: Turn on Tag
Battery Status will appear for Approximately. 5sec.
Tag will then begin to display programmed information
- 2: Message Selection
Momentary press pushbutton on back.
Each press will scroll through the Messages programmed in memory from 1st. enabled message (see Setup) until last
When Message to be displayed appears, wait >5sec. to lock in selection
After Last message, next button press will select Scroll of all messages
- 3: Brightness Adjustment
Press & Hold the pushbutton switch on back for >5sec.
% of Brightness will appear. Continue to hold Button until desired Level is displayed



Information and Software obtained from or supplied by Mpja.com or Marlin P. Jones and Associates inc. is supplied as a service to our customers and accuracy or usefulness is not guaranteed nor is it definitive of any particular part or manufacturer. Use of information and suitability for any application is at users own discretion and user assumes all risk.

All rights are retained by the Author



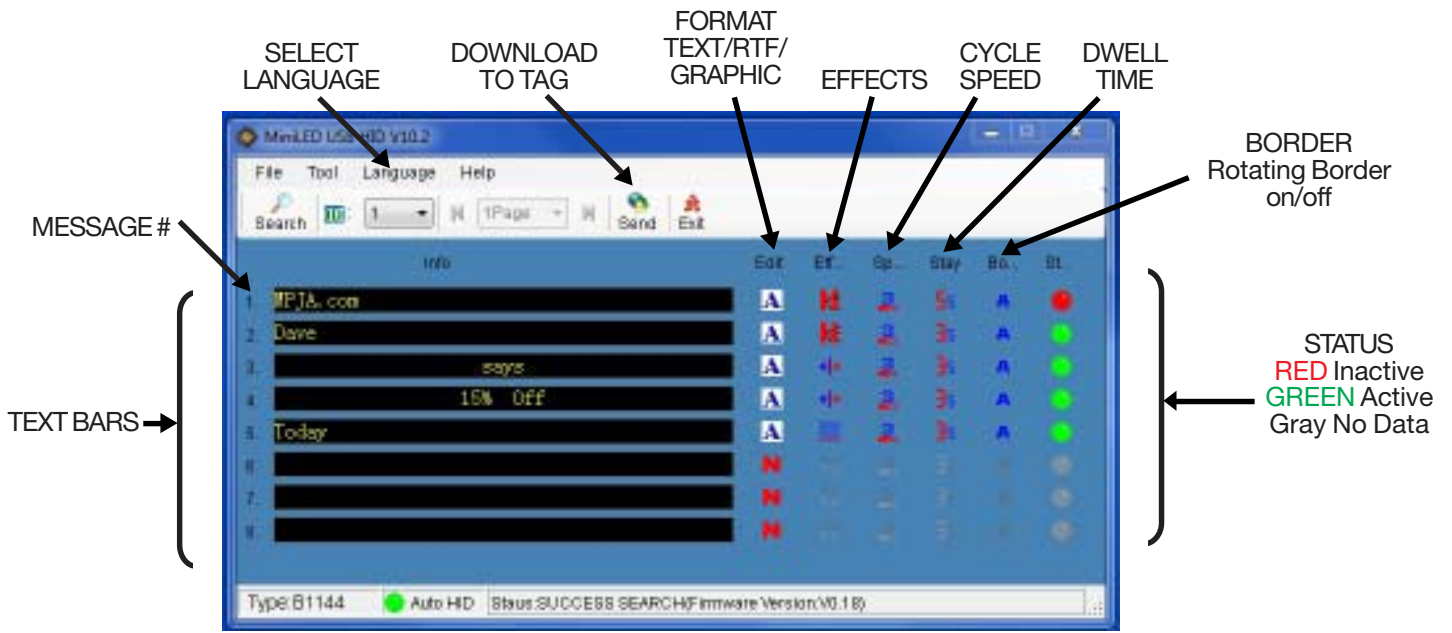
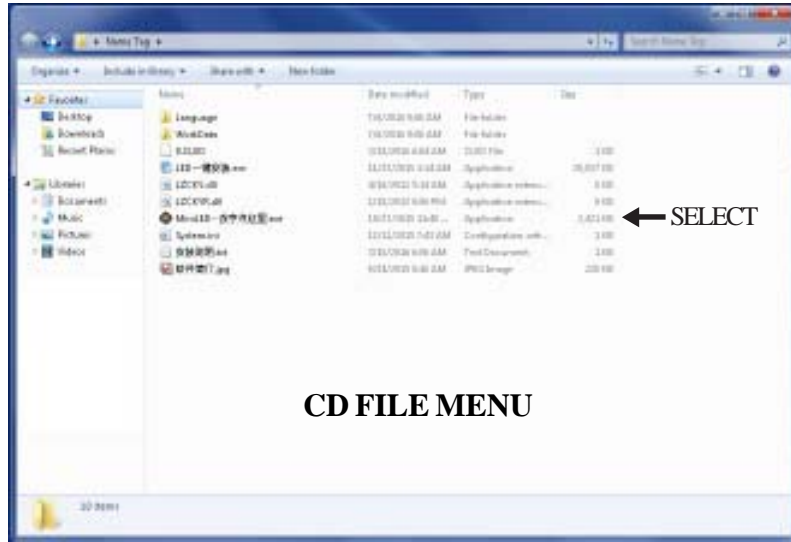
MARLIN P. JONES & ASSOC., INC.

P.O. Box 530400 Lake Park, FL 33403

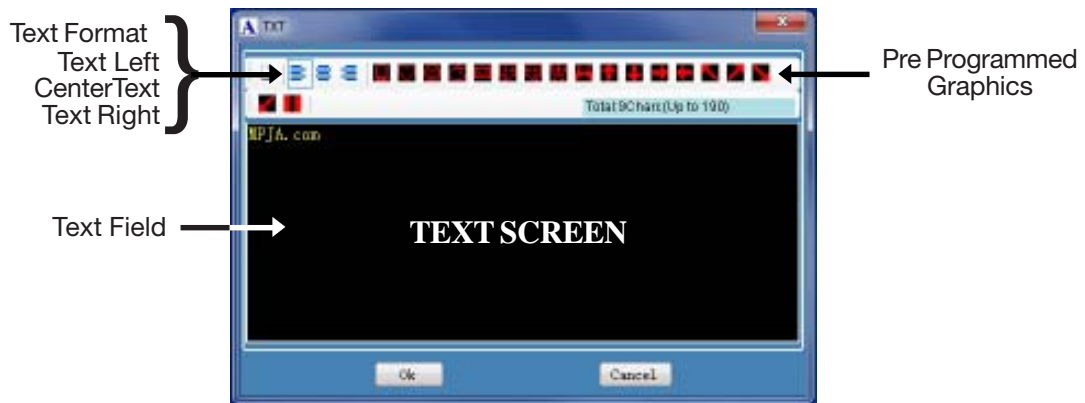
800-652-6733 FAX 561-844-8764

WWW.MPJA.COM

33026 & 33038-MI Scrolling LED Name Tags



MAIN SCREEN



33026 & 33038-MI

Scrolling LED Name Tags

The screenshot shows the MinLED LED Name Tag v10.2 software interface. It features a menu bar (File, Tool, Language, Help), a toolbar (Search, 1, 1Page, Send, Exit), and a main display area with columns for 'Info', 'Edit', 'Et...', 'Sp...', 'Stay', 'Bo...', and 'St'. The 'Info' column contains a list of messages: 1. MPJA.com, 2. Dave, 3. says, 4. 15% OFF, 5. Today, 6. (blank), 7. (blank), 8. (blank). The 'Edit' column has icons for text, RTF, image, GIF, and delete. The 'Et...' column has icons for effects like 'Show', 'Continuous Left', 'Continuous Right', 'Move Left', 'Move Right', 'Move UP', 'Move Down', 'Horizontal Expand', 'Snow Flake', 'Flash', and 'Jiggle'. The 'Sp...' column has icons for dwell times from 0 to 5 seconds. The 'Stay' column has icons for cycle speeds from 0 to 5. The 'Bo...' column has a 'Rotating Border on/off' icon. The 'St' column has status indicators: RED (Inactive), GREEN (Active), and Gray (No Data). A 'MESSAGE #' label is on the left. A legend on the right explains the status colors.

SELECT LANGUAGE DOWNLOAD TO TAG FORMAT TEXT/RTF/GRAPHIC EFFECTS CYCLE SPEED DWELL TIME

BORDER Rotating Border on/off

MESSAGE #

STATUS
 RED Inactive
 GREEN Active
 Gray No Data

- | EFFECTS | FORMAT | DWELL | CYCLE SPEED |
|------------------------------------|----------------|------------------------------------|-------------|
| Auto Scan through all active Msgs. | TXT | <input type="checkbox"/> No Dwell | |
| Show | RTF | <input type="checkbox"/> Second | 0 Fastest |
| Continuous Left | Image | <input type="checkbox"/> 2 Seconds | 5 Slowest |
| Continuous Right | GIF Animations | <input type="checkbox"/> 3 Seconds | |
| Move Left | Del... | <input type="checkbox"/> 4 Seconds | |
| Move Right | | <input type="checkbox"/> 5 Seconds | |
| Move UP | | | |
| Move Down | | | |
| Horizontal Expand | | | |
| Snow Flake | | | |
| Flash | | | |
| Jiggle | | | |

Information and Software obtained from or supplied by Mpja.com or Marlin P. Jones and Associates inc. is supplied as a service to our customers and accuracy or usefulness is not guaranteed nor is it definitive of any particular part or manufacturer. Use of information and suitability for any application is at users own discretion and user assumes all risk.

All rights are retained by the Author



MARLIN P. JONES & ASSOC., INC.

P.O. Box 530400 Lake Park, FL 33403
 800-652-6733 FAX 561-844-8764
 WWW.MPJA.COM