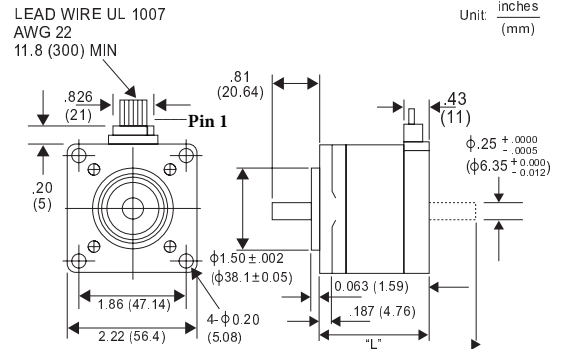
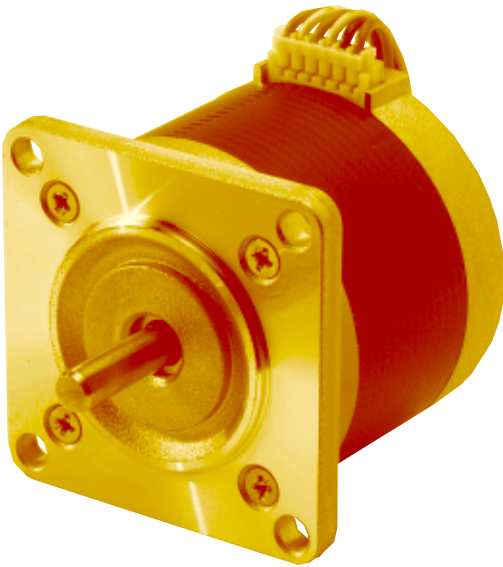


31394-MS

23LM-K 1.8° HYBRID

Microstep/
Low Noise Series

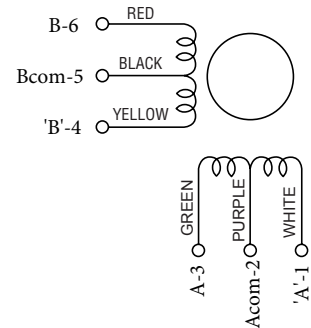


| | |
|-----------|-------------|
| P/N | "L" |
| 23LM-K3XX | 1.95 (49.5) |

GENERAL SPECIFICATIONS

Step Angle 1.8°
 Step Angle Accuracy +/-5%
 Temperature Rise 80° C Max.
 Ambient Temperature Range -20° to +50° C
 Insulation Resistance 100MΩ Min., 500 VDC
 Dielectric Strength 500 VAC for 1 min.
 Radial Play 0.02 mm Max. (450 g-load)
 End Play 0.08 mm Max. (450 g-load)

WINDING DIAGRAM



MODEL SPECIFICATIONS

| Model Number | Rated Voltage V | Rated Current/ Phase A | Winding Resistance/ Phase Ω | Holding Torque g-cm | Inductance mH | Rotor Inertia g-cm ² | Detent Torque g-cm | Weight g |
|--------------|--------------------|------------------------------|-----------------------------------|------------------------|------------------|------------------------------------|-----------------------|-------------|
| 23LM-K351 | 2.50 | 0.50 | 5.0 | 3,400 | 7.3 | 110.0 | 230 | 450* |

* Motor only, does not include vibration isolation bracket

TORQUE/SPEED CHARACTERISTICS

Model: 23LM-K35X
 Driver: Unipolar Chopper Dual • Supply Voltage: 24.0 (Volt)
 Drive Current: 1.50 (A/WDG) • Load Inertia: 161.0 (g-cm²)

