

30282-MP

MOISTURE SENSOR MODULE

A simple adjustable comparator circuit using a LM393 IC to detect water continuity in soil. Designed to interface to a Arduino or other micro controllers. Freeware available through www.arduino.cc/en

Power: 3.3-5VDC

Input: 2 Pin header for connection to sensor board

Outputs: TTL Compatible Digital

Feed through of Analog Input

4 Pin .1in Header pins for Power & Outputs

LEDs for 5V Power and Output status indication.

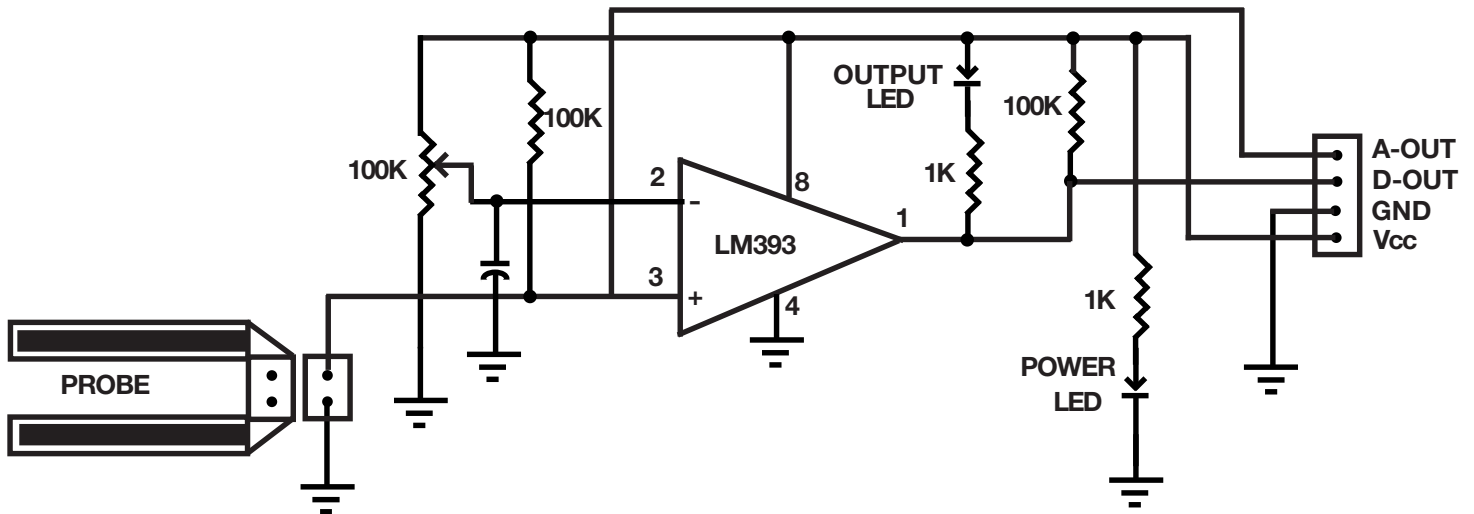
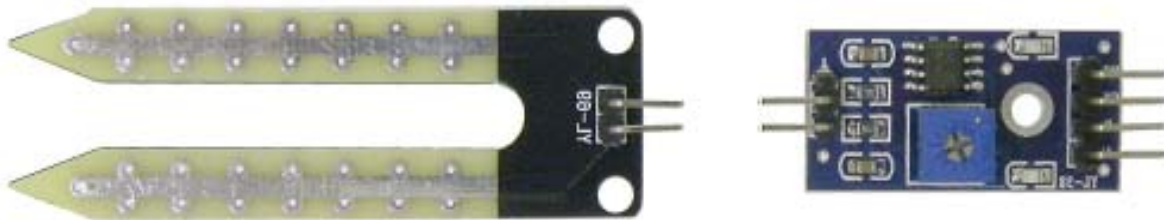
Comparator Board: 30mm X 16mm

Sensor Board: 55mm X 20mm

Set includes Both Boards & 6in. Interconnect jumpers colors may vary.

Probe L: 2-3/8" **W:** 13/16" **H:** 5/16"

Board L: 1-3/16" **W:** 5/8" **T:** 5/16" **WT:** .02



MARLIN P. JONES & ASSOC., INC.

P.O. Box 530400 Lake Park, FL 33403

800-652-6733 FAX 561-844-8764

WWW.MPJA.COM