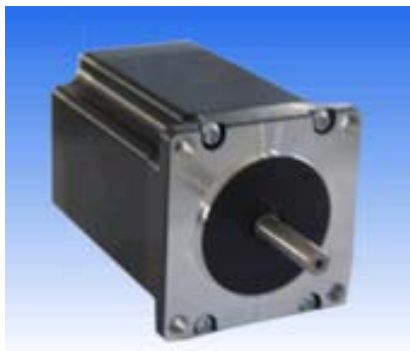


# 17454-MS 17455-MS 17456-MS 18189-MS 18686-MS 18687-MS 18728-MS 18729-MS



**1.8Deg**

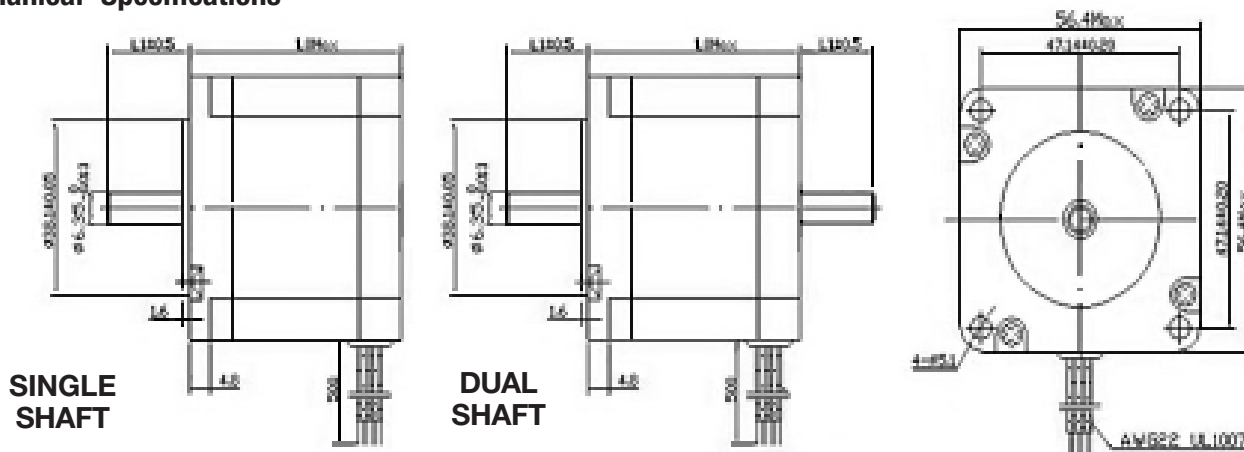
## General Specifications

Step Angle ----- 1.8Deg.  
 Insulation Resistance ----- 500V/100M Ohm  
 Ambient Temperature ----- 20-50C  
 Temperature Rise ----- 80Cmax  
 Radial Play ----- .02mm Max  
 End Play ----- 0.1-0.3mm  
 Shaft ----- Steel-5mmDia

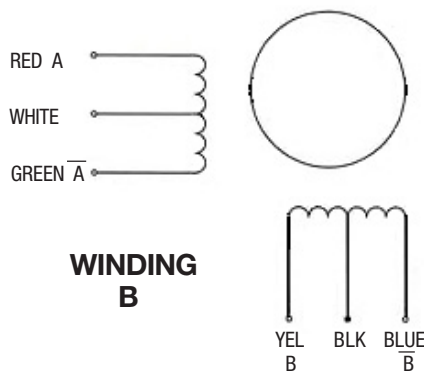
## Electrical Specifications

STOCK #	NEMA	P/N	VOLTS	AMPS	IND.	OHMS	HOLD TORQ	TYPE	WINDING	LO (BODY)	L1(SHAFT)	WT.
18686-MS	23	57BYGH008	2.8VDC	2	1.2mH	1.4	4.2Kg/cm	4 Phase/Uni-Polar	B	41mm	19mm	1
17454-MS	23	57BYGH006	24VDC	.34	90mH	71	4.4Kg/cm	4 Phase/Uni-Polar	B	41mm	19mm	1
17455-MS	23	57BYGH213	6.2VDC	1	10mH	6.2	9Kg/cm	4 Phase/Uni-Polar	B	54mm	19mm	1.6
18728-MS	23	57BYGH213-25	6.2VDC	1	10mH	6.2	9Kg/cm	4 Phase/Uni-Polar	B	54mm	20mm/Dual	1.6
18189-MS	23	57BYGH303	3.6VDC	.5	5.3mH	2.5	16Kg/cm	4 Phase/Uni-Polar	B	76mm	25mm	2.3
18729-MS	23	57BYGH303-50	3.6VDC	.5	5.3mH	2.5	16Kg/cm	4 Phase/Uni-Polar	B		24mm/Dual	2.4
18687-MS	23	57BYGH317	4.5VDC	2.5	3mH	1.8	18Kg/cm	4 Phase/Uni-Polar	B		25mm	3.4
17456-MS	23	57BYGH405A	3.6VDC	3	2.4mH	1.2	21Kg/cm	4 Phase/Uni-Polar	B		19mm	2.6

## Mechanical Specifications



## Motor Wiring



**MARLIN P. JONES & ASSOC., INC.**

P.O. Box 530400 Lake Park, FL 33403

800-652-6733 FAX 561-844-8764

WWW.MPJA.COM