

18188-MS

2 PHASE 1.8° STEPMOTOR DRIVER

CW260C

SPECIFICATIONS:

Power Input: 24-70VDC (70V Absolute Max)
 Control Inputs: <20mA Optically Isolated
 Output Drive Current: 2-6A
 Stepping: Basic: 1/1=1.8°
 Microstepping: 1/2-1/4-1/8-1/16-1/32-1/64-1/128-1/256
 1/5-1/10-1/25-1/50-1/125-1/250
 Protection: Overheat/50% Current lock/Motor Miswire
 Connections: Terminal Strips
 Physical: L: 5-7/8" W: 2" H: 4-3/8" WT: 1.25lb

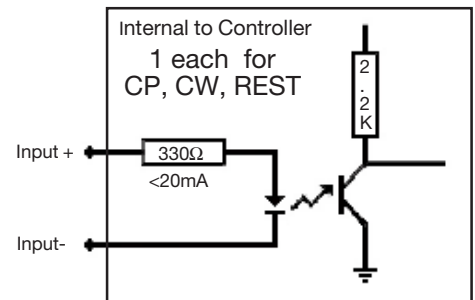
INPUT/OUTPUT CONNECTIONS:

Outputs:

A+ Motor Winding Phase A+
 A- Motor Winding Phase A-
 B+ Motor Winding Phase B+
 B- Motor Winding Phase B-

Inputs:

Vcc+: Input Power Positive
 GND-: Input Power Negative
 REST+ Turns Outputs ON/OFF
 REST- Turns Output ON/OFF (Return)
 CP+ Step Pulse
 CP- Step Pulse (Return)
 CW+ Direction "1"/"HIGH" Forward "0"/"LOW" Reverse
 CW- Direction (Return)



NOTES:

CP, CW & REST are Opto-Coupled <20mA (Logic) CP is + edge triggered
 When used above 3A output or Above 30°C, Module must be mounted to Heatsink/metal panel or use fan to provide Axial air flow
 Internal timer sets output to 1/2 of programmed Current after no input signal is received for 1/2 Second to prevent motor heating. **SEE "S-4" Setting Below**
 Should motor oscillate/show erratic rotation/torque/reversing problems, Check motor wiring to driver

OUTPUT CURRENT SELECTION

Switch: 0="ON" lever Down 1="OFF" Lever Up

I out	2.00A	2.57A	3.14A	3.71A	4.28A	4.86A	5.43A	6.00A
S1	0	1	0	1	0	1	0	1
S2	0	0	1	1	0	0	1	1
S2	0	0	0	0	1	1	1	1

S4: 0="ON" lever Down 1="OFF" Lever Up

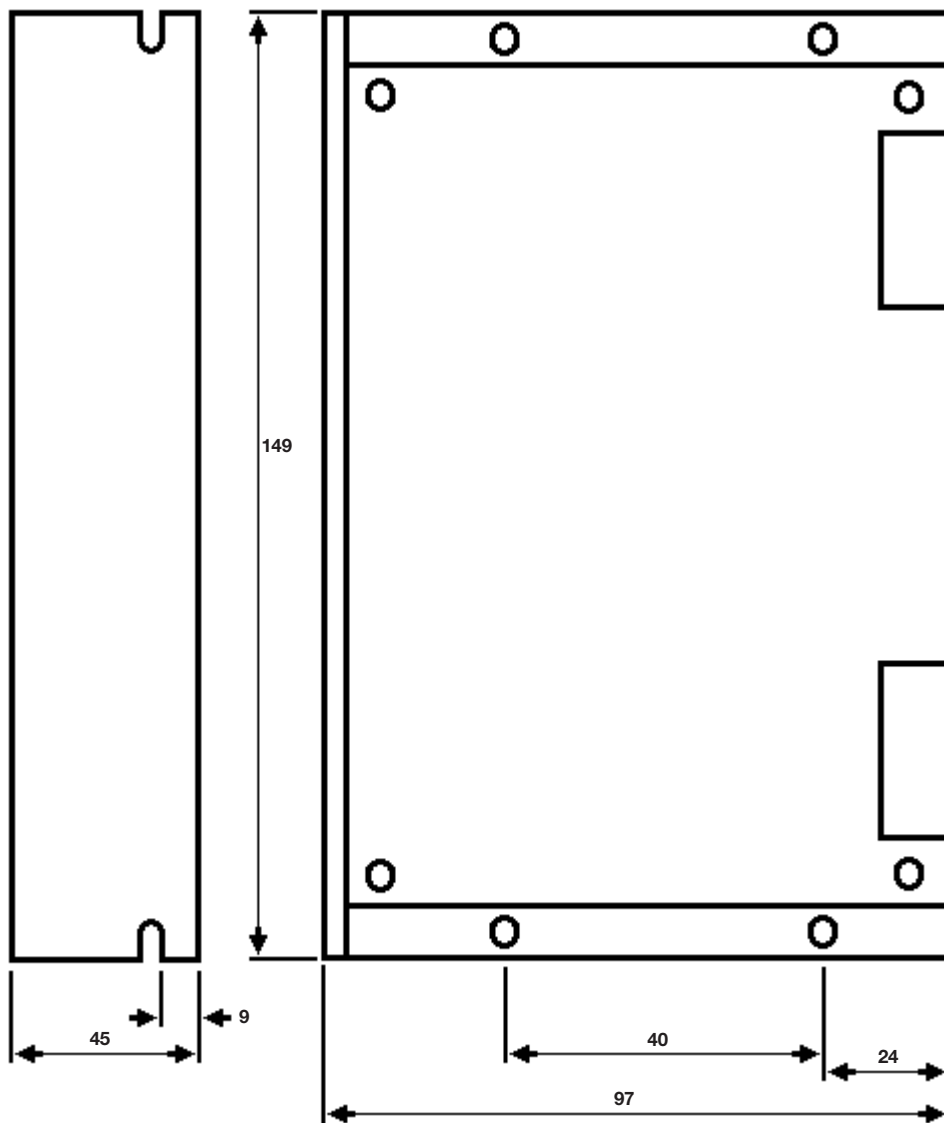
1= Output @ 1/2 of programmed Current after no input signal is received for 1/2 Second
 0= Output Remains at Full Current even after no input signal is received for 1/2 Second

MICRO STEP SELECTION

Switch: 0="ON" lever Down 1="OFF" Lever Up

STEP	1/1	1/2	1/4	1/8	1/16	1/32	1/64	1/128	1/256	1/5	1/10	1/25	1/50	1/125	1/250
S5	1	0	0	0	0	0	0	0	0	1	1	1	1	1	1
S6	1	0	1	0	1	0	1	0	1	0	1	0	1	0	1
S7	1	0	0	1	1	0	0	1	1	0	0	1	1	0	0
S8	1	0	0	0	0	1	1	1	1	0	0	0	0	1	1

LAYOUT (mm) Not to Scale



MARLIN P. JONES & ASSOC., INC.

P.O. Box 530400 Lake Park, FL 33403

800-652-6733 FAX 561-844-8764

WWW.MPJA.COM