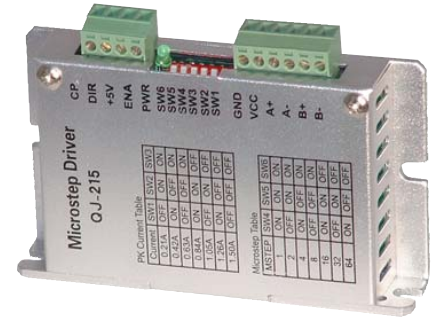


18187-MS 2 PHASE 1.8° STEPMOTOR DRIVER

QJ-215

SPECIFICATIONS:

Power Input: 12-32VDC (36V Absolute Max)
 Control Inputs: +5V TTL <20mA Optically Isolated
 Output Drive Current: 0.2-1.5A
 Stepping: Basic: 1/1=1.8°
 Microstepping: 1/2-1/4-1/8-1/16-1/32-1/64
 Protection: Overheat/50% Current lock
 Connections: Terminal Strips
 Physical: L: 3-7/8" W: 2-1/2" T: 3/4" WT: .25lb



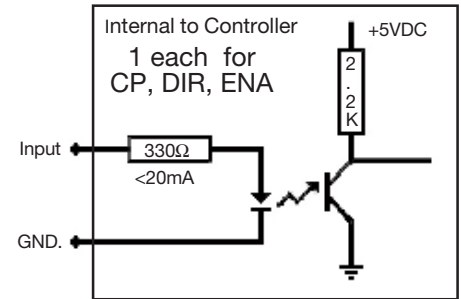
INPUT/OUTPUT CONNECTIONS:

Outputs:

A+ Motor Winding Phase A+
 A- Motor Winding Phase A-
 B+ Motor Winding Phase B+
 B- Motor Winding Phase B-

Inputs:

VCC+: Input Power Positive
 GND-: Input Power & Logic Negative
 +5VDC Logic Power for Opto-Couplers
 ENA Turns Outputs ON/OFF
 CP Step Pulse
 DIR "1"/"HIGH" Forward
 "0"/"LOW" Reverse



NOTES:

CP, DIR & ENA are +5V logic levels CP is + edge triggered
 DO NOT SHORT motor wires; Damage will occur to Driver
 When used above 1.05A output or Above 30°C, Module must be mounted to Heatsink/metal panel or use fan to provide Axial air flow
 Internal timer sets output to 1/2 of programmed Current after no input signal is received for 1/2 Second to prevent motor heating.
 Should motor oscillate/show erratic rotation/torque/reversing problems, Check motor wiring to driver

MICRO STEP SELECTION

Switch: 0="ON" lever Down
 1="OFF" Lever Up

STEP	S4	S5	S6
1	0	0	0
1/2	1	0	0
1/4	0	1	0
1/8	1	1	0
1/16	0	0	1
1/32	1	0	1
1/64	0	1	1

OUTPUT CURRENT LIMIT SELECTION

Switch: 0="ON" lever Down
 1="OFF" Lever Up

I _{OUT}	S1	S2	S3
.21A	0	0	0
.42A	0	0	1
.63A	0	1	0
.84A	0	1	1
1.05A	1	0	0
1.26A	1	0	1
1.5A	1	1	0

18187-MS 2 PHASE 1.8° STEPMOTOR DRIVER QJ-215

DIMENSIONS: DRAWING NOT TO SCALE

