

- Home
- About us
- Showroom



**Hybrid Stepper Motors**

2/4 Phase

- 8H2A
- 11H2A
- 14H2A
- 14H2M
- 14H2K
- 14H2R
- 16H2M
- 16H2A
- 17H2M/K
- 17H2A
- 17H2E
- 23H2A
- 23H2M
- 23H2B
- 24H2A
- 34H2A
- 34H2B
- 34H2Y
- 34H2M
- 43H2A

Precision Linear Motor

3 Phase

- 17H3A
- 23H3A
- 24H3A
- 34H3A

5 Phase

- 24H5A
- 34H5B

**AC Servo Motors**

- AS60
- AS80
- AS90
- AS110
- AS130
- AS150
- AS180

**DC Brushless Motors**

- 42BLDC
- 57BLDC
- 60BLDC
- 70BLDC
- 90BLDC
- 110BLDC
- Brushless Servo Motor

**PM Stepper Motors**

- 15PM
- 20PM
- 25PM
- 35PM
- 42PM
- 57PM
- PM Stepper Gear Motors
- 35PM42Z Linear Motor
- 57PMZ Linear Motor

**DC Gear Motors**

- 37ZY-36ZY
- 37ZY-528
- 1-025-050
- 56JBX-57ZY Planetary
- 56JBX-57BLDC Planetary

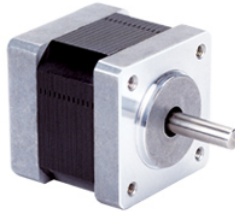
**Drivers & Accessories**

- Encoders
- Micro-Stepping Drivers

- Solution
- Support
- Feedback
- Contact us



► Nema14, 14H2A, 2-Phase Stepper Motors -35mm(1.8 degree)



Action



<< BACK

Print This Page

Email This Page

Save to Favorites

**Products Name:** 14H2A Stepper Motor -35mm(1.8 degree)

**Model:** 14H2A Series, 1.8 deg/step

**General Specifications**

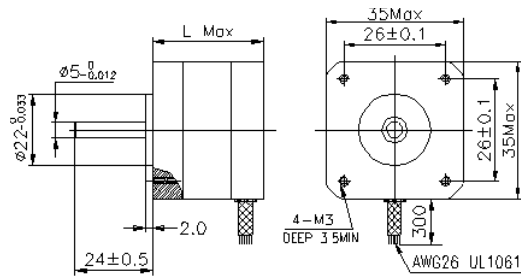
Step Accuracy ----- ±5%  
 Resistance Accuracy ----- ±10%  
 Inductance Accuracy ----- ±20%  
 Temperature Rise ----- 80°C MAX.  
 Ambient Temperature Range ----- -20°C~ +50°C  
 Storage Temperature Range ----- -30°C~ +60°C  
 Insulation Resistance ----- 100M Ω MIN. 500V DC  
 Dielectric Strength ----- 500V AC 1min  
 Radial Play ----- 0.02mm MAX. (450g Load)  
 End Play ----- 0.08mm MAX. (450g Load)  
 Max. radial force ----- 28N  
 Max. axial force ----- 10N

**Details**

| Electrical Specifications: |          |                   |                   |                        |                       |                           |                          |                                    |                 |                  |
|----------------------------|----------|-------------------|-------------------|------------------------|-----------------------|---------------------------|--------------------------|------------------------------------|-----------------|------------------|
| Series Model               | Old P/N  | Motor Length (mm) | Rated Current (A) | Phase Resistance (ohm) | Phase Inductance (mH) | Holding Torque (N.cm Min) | Detent Torque (N.cm Max) | Rotor Inertia (g.cm <sup>2</sup> ) | Lead Wire (No.) | Motor Weight (g) |
| 14H2A9405                  | 14HY9401 | 22                | 0.5               | 12                     | 7.8                   | 6                         | 0.5                      | 11                                 | 4               | 80               |
| 14H2A2405                  | 14HY2420 | 28                | 0.46              | 20                     | 14                    | 12                        | 0.8                      | 11                                 | 4               | 120              |
| 14H2A2408                  | 14HY2402 | 28                | 0.8               | 5.0                    | 5.0                   | 12                        | 0.8                      | 11                                 | 4               | 120              |
| 14H2A2604                  | 14HY2630 | 28                | 0.4               | 30                     | 11                    | 9                         | 0.8                      | 11                                 | 6               | 120              |
| 14H2A3404                  | 14HY3401 | 34                | 0.42              | 25                     | 32                    | 18                        | 1.0                      | 13                                 | 4               | 160              |
| 14H2A3408                  | 14HY3402 | 34                | 0.8               | 6.5                    | 9.8                   | 18                        | 1.0                      | 13                                 | 4               | 160              |
| 14H2A3604                  | 14HY3630 | 34                | 0.4               | 30                     | 22                    | 12                        | 1.0                      | 13                                 | 6               | 160              |
| 14H2A5415                  | 14HY5401 | 55                | 1.5               | 3.4                    | 7.2                   | 32                        | 1.6                      | 17                                 | 4               | 250              |

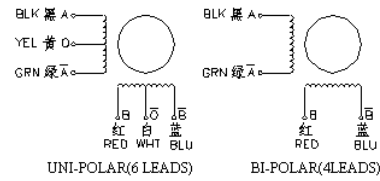
**\*Note: We can also manufacture products according to customer's requirements.**

**Mechanical Dimensions:**



| Model   | Length (mm) |
|---------|-------------|
| 14H2A9X | 22          |
| 14H2A2X | 28          |
| 14H2A3X | 34          |
| 14H2A5X | 55          |

Wiring Diagram:



Matched Drivers

**2L415B, 2L542**



Copyright © 2006 All Right Reserved  
MotionKing Motor Industry Co.,Ltd.  
Stepper Motor (China)

Tel: 0086-519-8988 6261  
Fax: 0086-519-8515 1172  
E-mail: [sales@MotionKing.com](mailto:sales@MotionKing.com)