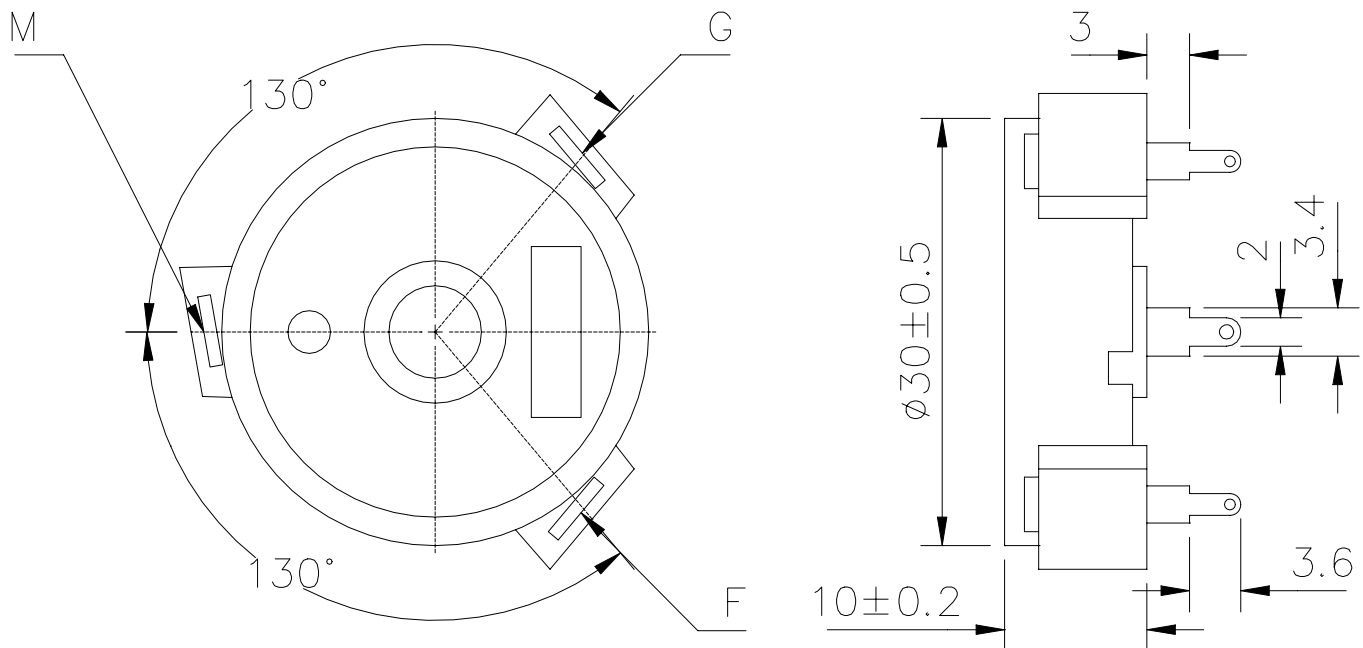


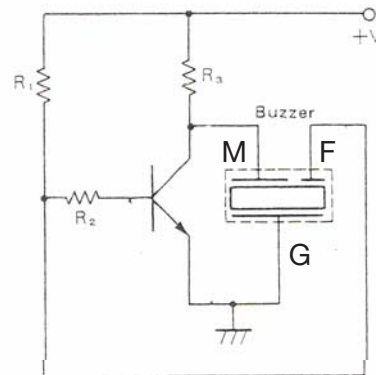
Specifications:**14470-SU**

Resonant Frequency (Hz)	3500 ± 500
Operating Voltage Max (Vdc)	3 ~ 28
Rated Voltage (Vdc)	12
Current Consumption Max. (mA)	10 at Rated Voltage
Sound Pressure Level Min. (dB)	88 at 30cm at Rated Voltage
Operating Temperature (°C)	-20 ~ +90
Storage Temperature (°C)	-30 ~ +100
Housing	ABS 777D UL94HB plastic resin (Color: Black)
Leading Pin	Tin Plated Brass
Weight (Grams)	4.0
Options	For other options contact factory

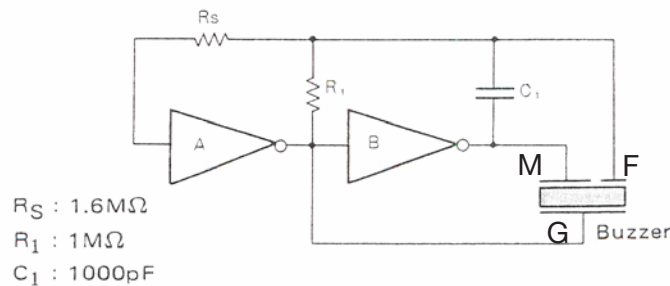
Dimensions: (units: mm)

Technical**APPLICATION
Guide****Self-Drive Transducer Circuits**

Self Drive Transducers have three terminals. The third terminal supplies a feed-back voltage that is 180° out of phase with the drive signal. Below are two circuits that can be used with these types of transducers.



$R_1 : 200K\Omega$
 $R_2 : 10K\Omega$
 $R_3 : 510\Omega$



$R_S : 1.6M\Omega$
 $R_1 : 1M\Omega$
 $C_1 : 1000pF$

It should be noted that these circuits are only initial suggestions. Values of the resistors may need to be adjusted depending on the particular transducer model used. Square-wave type signals result in more sound level than sine-wave type signals.