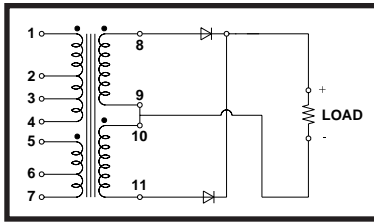
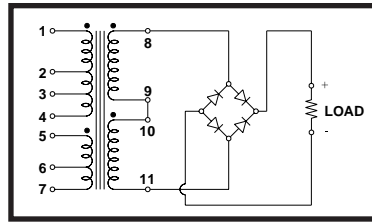


Rectifier Transformers - Terminal Connection Data

Full Wave C.T.



Full Wave Bridge



Sec.	STANCOR PART NUMBER	Primary Connections		Full-Wave C.T. Output 2.0 A. D.C.				Full-Wave Bridge Output 1.25 A. D.C.			
		Input 117 VAC Term No.	Connect Term. No.	Resistive Load		Capacitive Load		Resistive Load		Capacitive Load	
				Sec. Volts A.C.	Output Volts D.C.	Sec. Volts A.C.	Output Volts D.C.	Sec. Volts A.C.	Output Volts D.C.	Sec. Volts A.C.	Output Volts D.C.
A	RT-201	1-2	-	29.4	11.2	28.8	13.8	28.5	23.0	27.9	30.0
		1-7	2-6	26.0	9.8	25.7	11.7	25.4	20.0	25.1	26.4
		1-6	2-5	23.0	8.4	22.7	9.9	22.3	17.3	21.8	22.2
		1-7	2-5	20.9	7.4	20.8	8.6	20.2	15.4	19.8	19.7
		1-3	-	19.4	6.7	19.1	7.6	18.6	13.9	18.2	17.6
		1-7	3-6	17.8	6.1	17.6	6.7	17.2	12.8	16.8	15.7
		1-6	3-5	16.3	5.3	16.1	6.0	15.7	11.2	15.2	13.8
		1-7	3-5	14.9	4.7	14.8	5.3	14.3	10.3	14.1	12.4
		1-4	-	14.2	4.4	14.2	5.0	13.7	9.7	13.5	11.6
		1-7	4-6	13.4	4.0	13.3	4.4	12.7	8.8	12.5	10.4
		1-6	4-5	12.4	3.6	12.4	3.9	11.7	7.9	11.7	9.5
		1-7	4-5	11.7	3.3	11.7	3.5	11.1	7.4	11.1	8.7
				Full-Wave C.T. Output 4.0 A. D.C.				Full-Wave Bridge Output 2.0 A. D.C.			
B	RT-202	1-2	-	29.7	11.1	29.3	14.7	29.7	24.3	29.3	33.0
		1-7	2-6	26.2	9.8	26.0	12.6	26.2	21.5	26.0	29.0
		1-6	2-5	24.4	8.8	24.0	11.3	24.3	19.5	23.9	26.0
		1-7	2-5	21.9	7.8	21.7	9.9	21.8	17.6	21.5	23.1
		1-3	-	20.9	7.4	20.7	9.3	20.9	16.6	20.6	21.7
		1-7	3-6	19.2	6.6	18.9	8.2	19.1	15.1	18.9	19.6
		1-6	3-5	18.0	6.1	17.8	7.5	18.0	14.2	17.8	18.2
		1-7	3-5	16.6	5.5	16.4	6.6	16.6	12.8	16.4	16.3
		1-4	-	14.4	4.4	14.2	5.3	14.4	11.8	14.2	13.7
		1-7	4-6	13.5	4.1	13.4	4.9	13.5	10.1	13.4	12.6
		1-6	4-5	12.9	3.9	12.7	4.4	12.9	9.5	12.7	11.7
		1-7	4-5	12.2	3.7	12.0	4.0	12.2	8.9	12.0	10.8
				Full-Wave C.T. Output 8.0 A. D.C.				Full-Wave Bridge Output 4.0 A. D.C.			
C	RT-204	1-2	-	29.2	12.0	28.8	14.5	29.2	24.0	29.0	32.4
		1-7	2-6	25.7	10.5	25.7	12.6	25.7	21.1	25.4	29.2
		1-6	2-5	22.8	9.2	22.8	10.9	22.8	18.7	22.7	25.7
		1-7	2-5	20.6	8.3	20.6	9.6	20.7	16.6	20.6	22.8
		1-3	-	19.3	7.7	19.3	8.7	19.4	15.4	19.0	21.0
		1-7	3-6	17.6	7.0	17.6	7.8	17.8	14.0	17.6	19.0
		1-6	3-5	16.2	6.3	16.2	6.9	16.3	12.7	16.1	17.2
		1-7	3-5	15.0	5.8	15.0	6.3	15.1	11.6	14.9	15.6
		1-4	-	14.2	5.4	14.2	5.8	14.4	11.0	14.2	14.8
		1-7	4-6	13.3	5.0	13.3	5.3	13.4	10.2	13.3	13.5
		1-6	4-5	12.5	4.6	12.5	4.9	12.6	9.4	12.5	12.4
		1-7	4-5	11.7	4.3	11.7	4.5	11.8	8.8	11.6	11.4

Terminal Connection Data continued on page 60.



White-Rodgers • Emerson Electric Co.
9797 Reavis Road • St. Louis, MO 63123
(314) 865-8799 • Fax (314) 638-2400

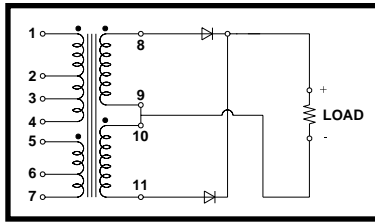


STANCOR

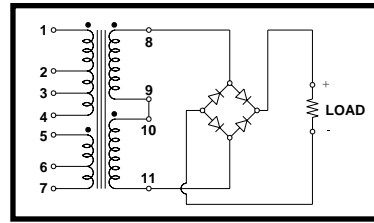
POWER TRANSFORMERS

Rectifier Transformers - Terminal Connection Data

Full Wave C.T.



Full Wave Bridge

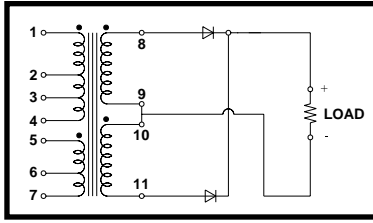


Sec.	STANCOR PART NUMBER	Primary Connections		Full-Wave C.T. Output 12.0 A. D.C.				Full-Wave Bridge Output 6.0 A. D.C.			
				Resistive Load		Capacitive Load		Resistive Load		Capacitive Load	
				Input 117 VAC Term No.	Connect Term. No.	Sec. Volts A.C.	Output Volts D.C.	Sec. Volts A.C.	Output Volts D.C.	Sec. Volts A.C.	Output Volts D.C.
A	RT-206	1-2	-	29.8	11.5	29.6	14.4	29.6	24.0	29.2	32.0
		1-7	2-6	26.0	9.9	25.8	12.0	25.8	20.6	25.4	27.3
		1-6	2-5	23.8	8.8	23.6	10.7	23.8	18.6	23.6	24.6
		1-7	2-5	21.2	7.6	21.0	9.0	21.2	16.4	21.0	21.4
		1-3	-	19.7	7.0	19.7	8.4	19.7	15.2	19.4	19.2
		1-7	3-6	17.9	6.2	17.8	7.2	17.9	13.5	17.8	17.3
		1-6	3-5	16.7	5.7	16.6	6.6	16.8	12.5	16.6	15.8
		1-7	3-5	15.4	5.1	15.4	5.9	15.4	11.4	15.2	14.0
		1-4	-	14.6	4.7	14.5	5.2	14.6	10.6	14.5	13.4
		1-7	4-6	13.5	4.2	13.4	4.7	13.5	9.8	13.4	12.0
		1-6	4-5	12.9	3.9	12.8	4.3	12.9	9.2	12.8	11.0
		1-7	4-5	12.0	3.4	12.0	3.9	12.0	8.4	12.0	10.0
				Full-Wave C.T. Output 15.0 A. D.C.				Full-Wave Bridge Output 8.0 A. D.C.			
B	RT-208	1-2	-	29.2	11.4	29.2	14.8	29.2	23.7	29.0	32.5
		1-7	2-6	25.4	9.9	25.4	12.5	25.3	21.0	25.2	27.0
		1-6	2-5	24.1	9.3	24.0	11.6	24.0	19.4	23.9	25.5
		1-7	2-5	21.5	8.2	21.5	10.0	21.3	17.0	21.3	22.0
		1-3	-	19.3	7.1	19.3	8.7	19.1	14.9	19.1	21.2
		1-7	3-6	17.6	6.4	17.5	7.7	17.4	13.4	17.4	17.0
		1-6	3-5	16.8	6.0	16.8	7.2	16.8	12.9	16.7	16.1
		1-7	3-5	15.6	5.5	15.5	6.5	15.4	11.7	15.4	14.5
		1-4	-	14.4	5.0	14.4	5.7	14.2	10.7	14.2	13.1
		1-7	4-6	13.4	4.5	13.4	5.1	13.3	9.8	13.3	11.9
		1-6	4-5	13.0	4.3	12.9	4.8	12.9	9.5	12.8	11.4
		1-7	4-5	12.2	3.9	12.1	4.4	12.1	8.7	12.1	10.4
				Full-Wave C.T. Output 22.5 A. D.C.				Full-Wave Bridge Output 12.0 A. D.C.			
C	RT-2012	1-2	-	29.1	11.4	28.8	14.3	29.0	23.5	28.7	33.0
		1-7	2-6	25.2	9.7	25.1	12.0	25.3	20.4	25.1	28.0
		1-6	2-5	23.6	8.9	23.6	10.9	23.5	18.8	23.5	25.7
		1-7	2-5	21.1	7.7	21.0	9.4	21.0	16.3	20.9	22.3
		1-3	-	19.3	7.2	19.3	8.3	19.2	14.8	19.2	20.2
		1-7	3-6	17.7	6.3	17.7	7.2	17.5	13.4	17.5	17.7
		1-6	3-5	16.9	6.0	16.9	6.7	16.8	12.5	16.8	16.7
		1-7	3-5	15.6	5.4	15.7	5.9	15.5	11.5	15.5	15.1
		1-4	-	14.6	4.9	14.6	5.4	14.5	10.7	14.5	13.7
		1-7	4-6	13.5	4.4	13.5	4.7	13.5	9.7	13.4	12.6
		1-6	4-5	13.0	4.3	13.0	4.5	13.0	9.3	13.0	11.9
		1-7	4-5	12.2	3.9	12.1	4.0	12.2	8.6	12.0	10.8

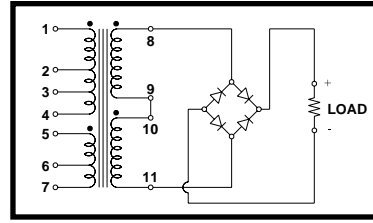
Terminal Connection Data continued on page 61.

Rectifier Transformers - Terminal Connection Data

Full Wave C.T.



Full Wave Bridge



Sec.	STANCOR PART NUMBER	Primary Connections		Full-Wave C.T. Output 4.0 A. D.C.				Full-Wave Bridge Output 2.0 A. D.C.			
				Resistive Load		Capacitive Load		Resistive Load		Capacitive Load	
				Input 117 VAC Term. No.	Connect Term. No.	Sec. Volts A.C.	Output Volts D.C.	Sec. Volts A.C.	Output Volts D.C.	Sec. Volts A.C.	Output Volts D.C.
A	RT-402	1-2	-	58.0	25.0	58.0	33.5	58.0	51.5	58.0	72.5
		1-7	2-6	51.0	21.5	51.0	29.0	51.0	45.0	51.0	63.5
		1-6	2-5	45.5	19.0	45.5	25.0	45.5	40.0	45.5	56.0
		1-7	2-5	41.0	17.0	41.0	22.0	41.0	36.0	41.0	50.0
		1-3	-	38.0	15.5	38.0	20.5	38.5	33.5	38.5	46.5
		1-7	3-6	35.0	14.0	35.0	18.5	35.0	30.5	35.0	42.5
		1-6	3-5	32.0	13.0	32.0	16.5	32.0	28.0	32.0	39.0
		1-7	3-5	29.5	12.0	29.5	145.0	30.0	26.0	30.0	36.0
		1-4	-	28.0	11.0	28.0	14.0	28.5	24.5	28.5	33.5
		1-7	4-6	26.0	10.0	26.0	13.0	26.5	22.5	26.5	31.5
		1-6	4-5	24.5	9.5	24.5	12.0	25.0	21.0	25.0	29.0
		1-7	4-5	23.0	9.0	23.0	11.0	23.5	20.0	23.5	27.0
				Full-Wave C.T.				Full-Wave Bridge Output 8.0 A. D.C.			
B	RT-408	1-2	-	-	-	-	-	53.5	44.0	53.0	63.0
		1-7	2-6	-	-	-	-	50.0	40.5	50.0	59.0
		1-6	2-5	-	-	-	-	45.3	37.0	45.0	52.0
		1-7	2-5	-	-	-	-	42.5	34.5	42.0	48.0
		1-3	-	-	-	-	-	37.5	30.5	37.5	40.0
		1-7	3-6	-	-	-	-	35.5	27.5	35.5	39.0
		1-6	3-5	-	-	-	-	32.5	25.0	33.0	35.5
		1-7	3-5	-	-	-	-	31.5	24.0	31.5	31.5
		1-4	-	-	-	-	-	29.0	21.5	29.0	29.5
		1-7	4-6	-	-	-	-	27.5	20.5	27.5	28.0
		1-6	4-5	-	-	-	-	26.0	19.5	26.0	26.0
		1-7	4-5	-	-	-	-	25.0	18.0	25.0	25.0

